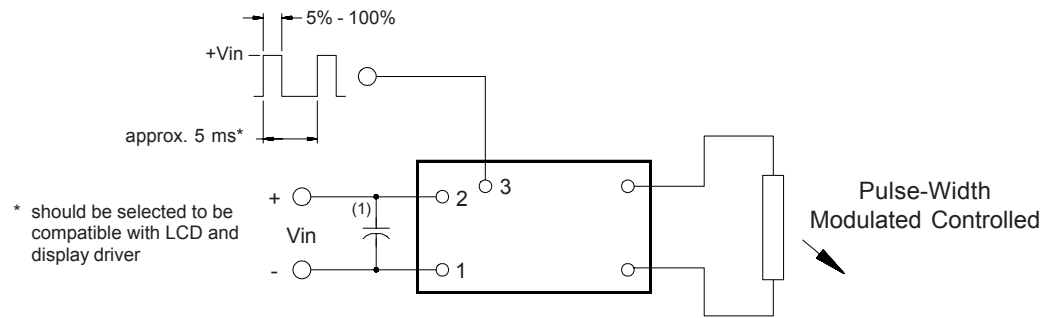


S2585

Dimming Option



* should be selected to be compatible with LCD and display driver

Note 1 Input by-pass capacitor (25 uf - 100uf) may be required to reduce reflected ripple.

Note 2 Full brightness with no control requires that pin 3 be tied to pin 2.



Endicott Research Group, Inc.

2601 Wayne St., Endicott NY 13760

607-754-9187



Endicott Research Group, Inc.

2601 Wayne St., Endicott NY 13760

607-754-9187 Fax 607-754-9255

<http://www.ergpower.com>

S2585

Specifications and Applications Information

7/2/01

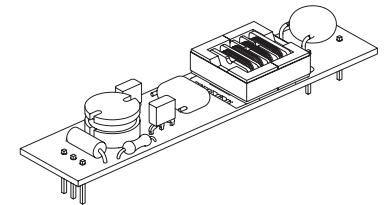
Preliminary

8m Class
DC to AC Inverter

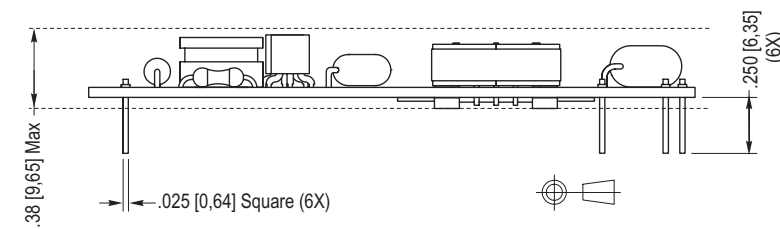
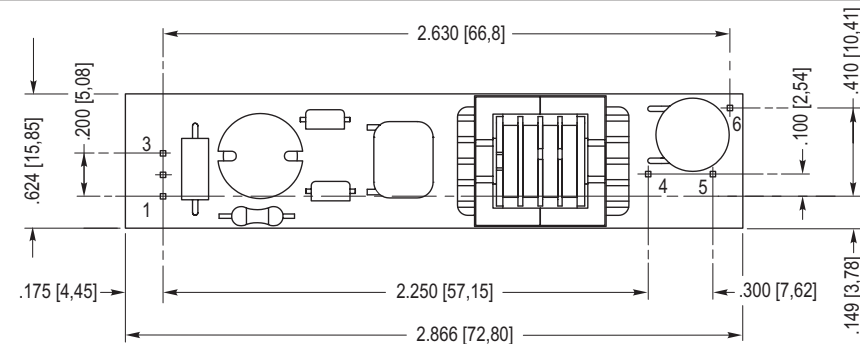
The ERG S2585 (**S-Series**) low profile dc to ac inverter is specifically designed to power the Planar MSPG320240DBCW2W LCD display module to a moderate brightness level from a +24 volt dc source.

This low profile inverter features:

- ✓ LCD Module Specific
- ✓ Display Compatible Output Connector
- ✓ Firm Specifications
- ✓ Application Information
- ✓ Designed, Manufactured and Supported in the USA
- ✓ Custom Input and Output Voltages
- ✓ Flexible System Interface



S-Series



- | | |
|----|---------|
| 1. | -Vin |
| 2. | +Vin |
| 3. | Control |
| 4. | Vout |
| 5. | Vout |
| 6. | NC |

Package Configuration

S2585

Absolute Maximum Ratings

Rating	Symbol	Value	Units
Input Voltage Range	Vin	-0.3 to +26.4	Vdc
Operating Temperature	To	0 to +70	°C
Storage Temperature	Tstg	-40 to +85	°C

Recommended Operating Conditions

Rating	Symbol	Value	Units
Input Voltage	Vin	+18 to 26.4	Vdc

Electrical Characteristics

Unless otherwise noted Vin = 24.00 Volts dc and Ta = 25 °C

Characteristic	Symbol	Min	Typ	Max	Units
Input Current	Iin	-	.08	.10	Adc
Operating Frequency	Fo	31	36	41	KHz
Minimum Output Voltage	Vout (min)	1000	-	-	Vrms
Efficiency	η	-	80	-	%
Output Current	Iout	-	5.3	-	marms
Output Voltage (When powering a load simulating the referenced display.)	Vout	-	290	-	Vrms
Pin3 Input Current Requirement	-	-	1	-	madc

After tube has been allowed to warm-up for 5 minutes.

Specifications subject to change without notice.

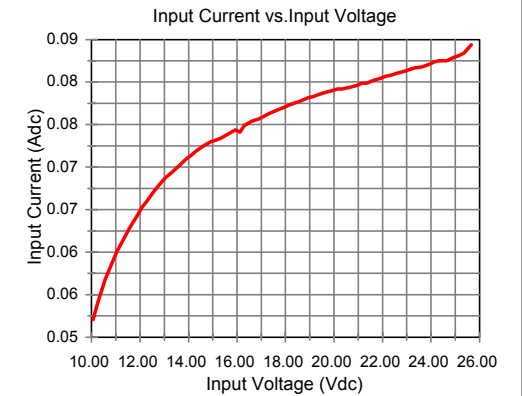
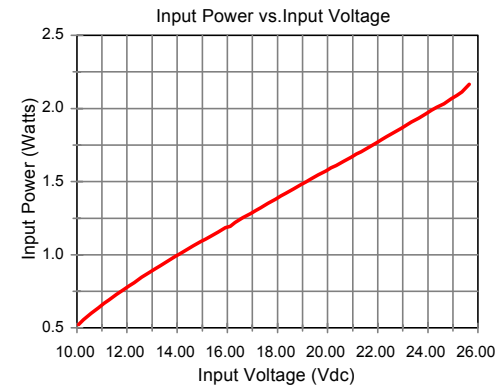
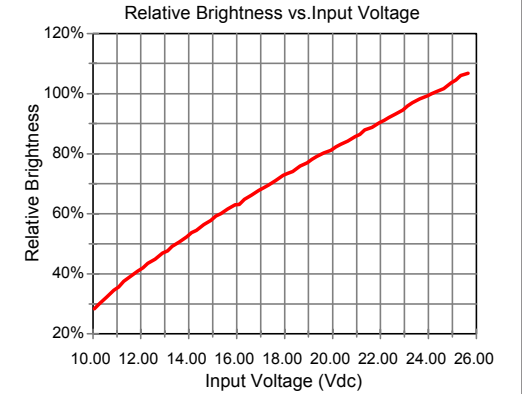
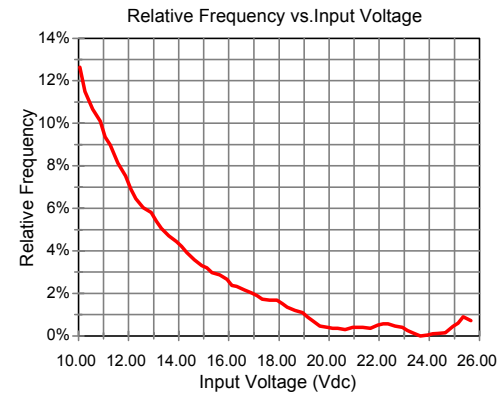


Endicott Research Group, Inc.

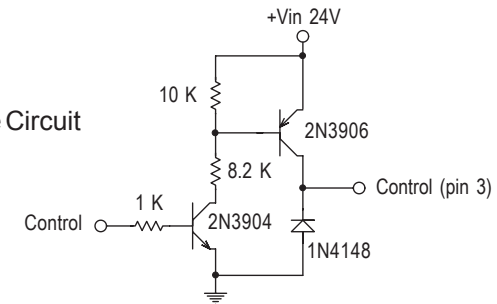
Made in USA

S2585

Typical Performance Curves



Disable Circuit



Endicott Research Group, Inc.