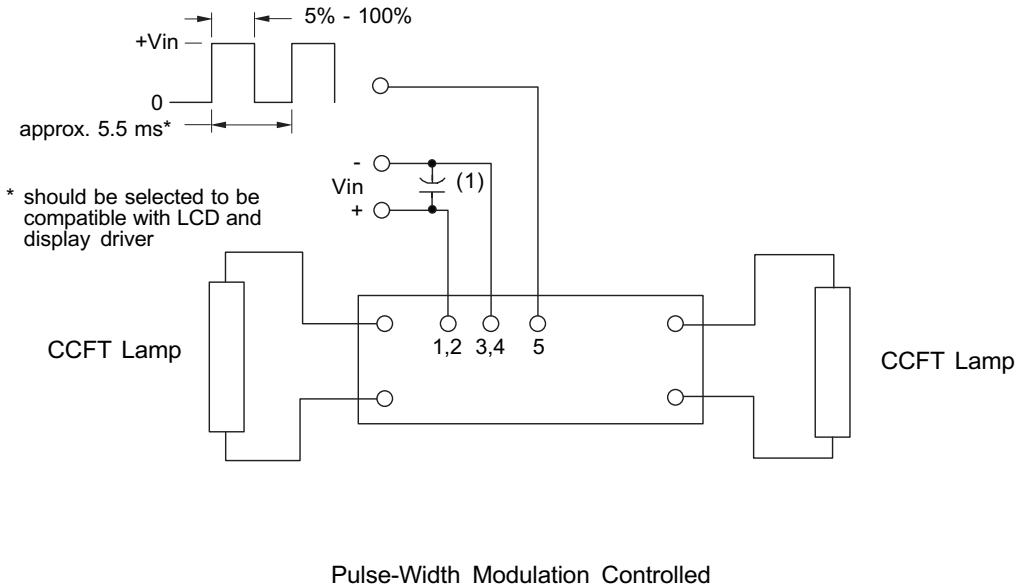


K2417

Dimming Option

(valid when the "C" jumper is removed)



* should be selected to be compatible with LCD and display driver

* Note 1 - Input by-pass capacitor (25uf - 100uf) may be required to reduce reflected ripple.



Endicott Research Group, Inc.

2601 Wayne St., Endicott NY 13760
607-754-9187



Endicott Research Group, Inc.

2601 Wayne St., Endicott NY 13760
607-754-9187 Fax 607-754-9255
<http://www.ergpower.com>

K2417

8m Class
2 Tube DC to AC Inverter

Specifications and Applications Information

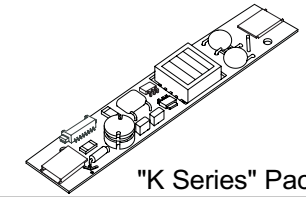
01/31/01

Preliminary

The ERG K2417 (8m Class) low profile dc to ac inverter is specifically designed to power the Hitachi SX25S003 LCD display module to a moderate brightness level from a +12 volt dc source.

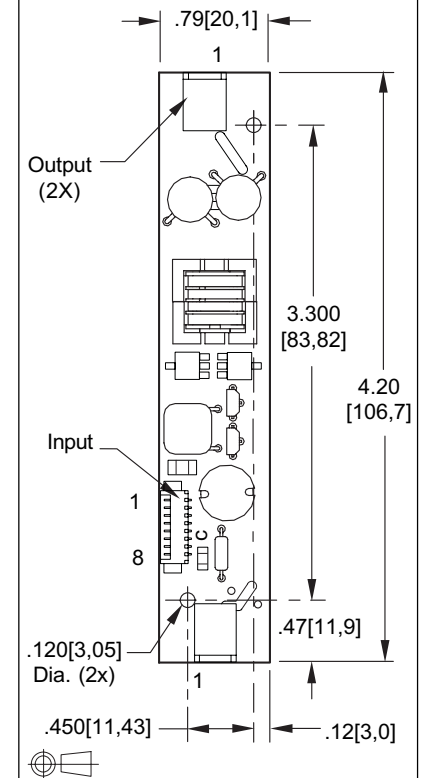
This low profile inverter features:

- ✓ Less Than 8 mm in Height
- ✓ LCD Module Specific
- ✓ Display Compatible Output Connector
- ✓ Firm Specifications
- ✓ Application Information
- ✓ Designed, Manufactured and Supported in the USA
- ✓ Custom Input and Output Voltages
- ✓ Flexible System Interface
- ✓ Notebook Display Head Compatible



"K Series" Package

Package Configuration



Pin Descriptions

Input Connector	Output Connectors
Molex 532-61-0890	JST SM02B-BHSS-1-TB
J1-1 Vin(+) J1-2 Vin(+) J1-3 GND J1-4 GND J1-5 Control * J1-6 NC J1-7 NC J1-8 NC	J2-1 ACout J3-1 ACout J2-2 ACout J3-2 ACout

* Valid with "C" Jumper Removed

K2417

Absolute Maximum Ratings

Rating	Symbol	Value	Units
Input Voltage Range	V _{in}	-0.3 to +13.2	Vdc
Operating Temperature	T _o	-0 to +70	°C
Storage Temperature	T _{stg}	-40 to +85	°C

Recommended Operating Conditions

Rating	Symbol	Value	Units
Input Voltage	V _{in}	+6 to 13.2	Vdc

Electrical Characteristics

Unless otherwise noted V_{in} = 12.00 Volts dc and T_a = 25 °C

Characteristic	Symbol	Min	Typ	Max	Units
Input Current	I _{in}	-	.51	.59	Adc
Operating Frequency	F _o	35	40	45	KHz
Minimum Output Voltage	V _{out} (min)	1500	-	-	Vrms
Efficiency	η	-	82	-	%
Output Current (per tube)	I _{out}	-	5.0	-	marms
Output Voltage (per tube) (When powering a load simulating the referenced display.)	V _{out}	-	500	-	Vrms
Pin3 Input Current Requirement	-	-	7	-	madc

After tube has been allowed to warm-up for 5 minutes. Specifications subject to change without notice.
External Disable Circuit shown on page 3.

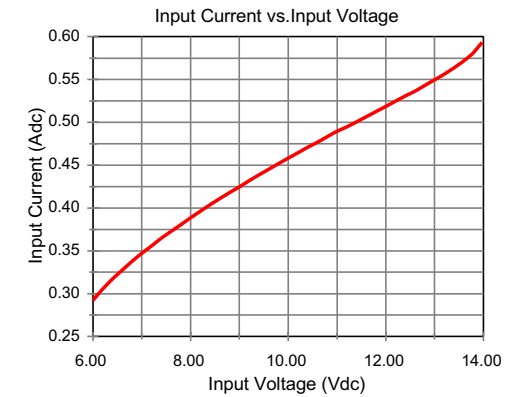
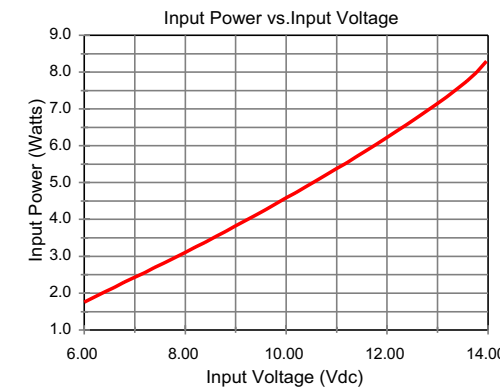
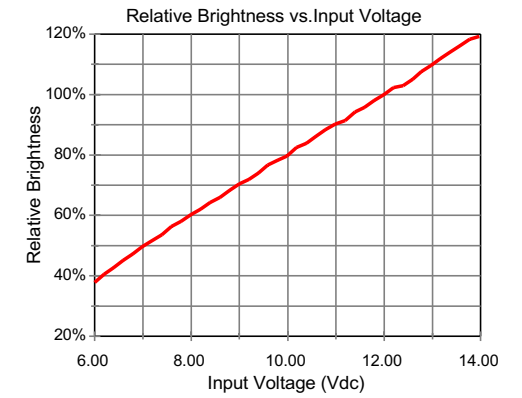
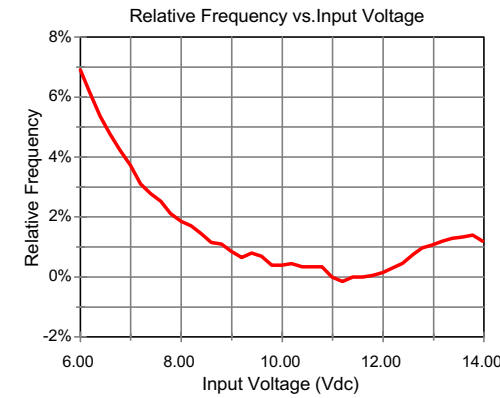


Endicott Research Group, Inc.

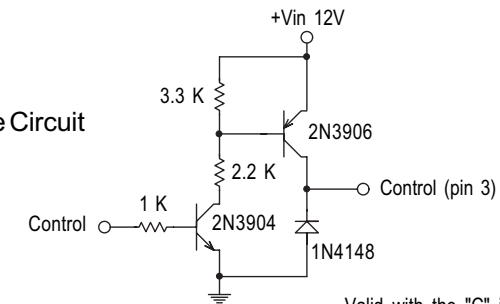
Made in USA

Typical Performance Curves

K2417



Disable Circuit



Valid with the "C" jumper removed



Endicott Research Group, Inc.