



Endicott Research Group, Inc.

2601 Wayne St., Endicott, NY 13760
607-754-9187 Fax 607-754-9255
<http://www.ergpower.com>

E3432

Specifications and Applications Information

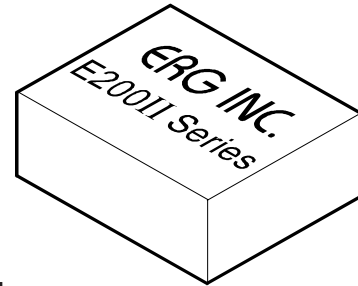
01/25/06

Preliminary

The E3432 (E200II Series) dc to ac inverter is specifically designed to power the Optrex DMF50840 CCFL to a moderate brightness level from a +5 volt dc source.

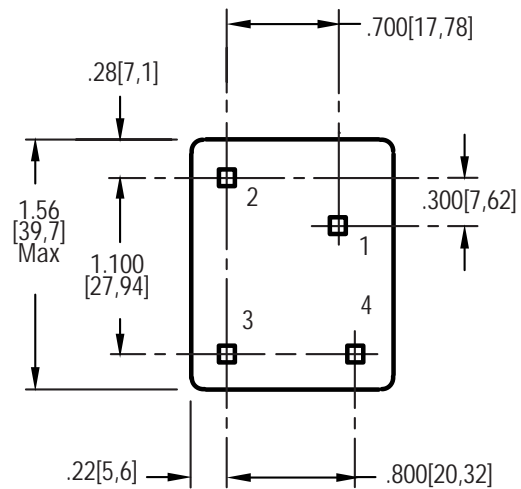
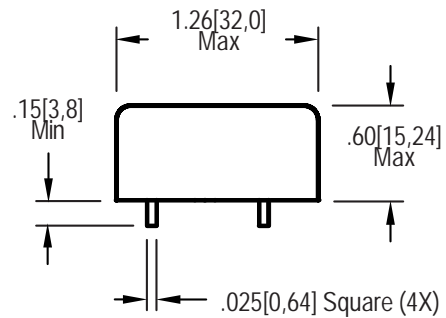
The E3432's small size and encapsulated package makes it the ideal power source for applications where small size, high efficiency and reliability are critical.

Single Lamp DC to AC Inverter

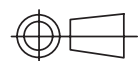


E200 Package

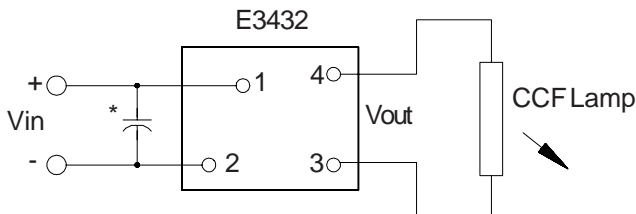
Package Configuration



- 1. Vin(+)
- 2. Vin(-)
- 3. Vout(AC)
- 4. Vout(AC)



Connection Diagram



* Low ESR type input bypass capacitor may be required (10uf - 100uf)

Absolute Maximum Ratings

Rating	Symbol	Value	Units
Input Voltage Range	Vin	-0.3 to +5.25	Vdc
Operating Temperature	To	0 to +70	°C
Storage Temperature	Tstg	-40 to +85	°C

Recommended Operating Ratings

Rating	Symbol	Value	Units
Input Voltage	Vin	+4.75 to 5.25	Vdc

Electrical Characteristics

Unless otherwise noted Vin = 5.00 Volts dc and Ta = 25°C

Characteristic	Symbol	Min	Typ	Max	Units
Input Current	Iin	-	.40	.46	Adc
Operating Frequency	Fo	29	34	39	KHz
Minimum Output Voltage	Vout (min)	1300	-	-	Vrms
Efficiency	-	-	76	-	%
Output Current	Iout	-	4.2	-	marms
Output Voltage (When powering a load simulating the referenced display)	Vout	-	360	-	Vrms

After lamp has be allowed to warm-up for 5 minutes.

Specifications subject to change without notice.

Application Notes:

- 1) Printed circuit boards should be free of traces beneath the inverter.
- 2) The minimum distance from high voltage areas of the inverter to any conductive material should be .12 inches per kilovolt of starting voltage.
- 3) Contact ERG for possible exceptions.



Endicott Research Group, Inc.

2601 Wayne St., Endicott, NY 13760

607-754-9187 Fax 607-754-9255

<http://www.ergpower.com>

Made in U.S.A.

page 2 of 2.