

E2742

THIS PAGE LEFT BLANK INTENTIONALLY



Endicott Research Group, Inc.
2601 Wayne St., Endicott NY 13760
607-754-9187



Endicott Research Group, Inc.
2601 Wayne St., Endicott NY 13760
607-754-9187 Fax 607-754-9255
<http://www.ergpower.com>

Specifications and Applications Information

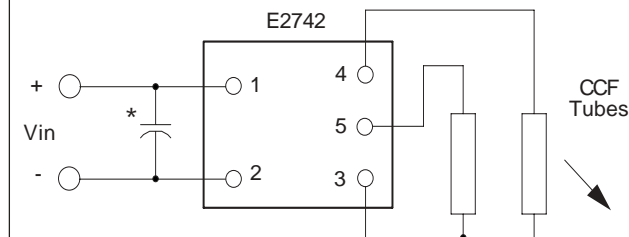
10/23/02

The ERG E2742 (E200II Series) dc to ac inverter is specifically designed to power the Panasonic EDTCB07QLF/EDTCB32QAF LCD display module to a moderate brightness level from a +12 volt dc source.

The E2742's small size, encapsulated package makes it the ideal power source for applications where small size, high efficiency and reliability are critical.

This inverter is designed to satisfy the most common cold-cathode lighting requirements for the Panasonic EDTCB07QLF/EDTCB32QAF display. Custom units, providing different inputs, outputs or package refinements are available.

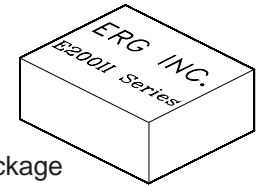
Connection Diagram



* Input bypass capacitor may be required (10uf - 100uf)

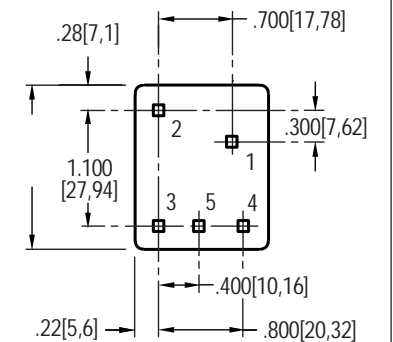
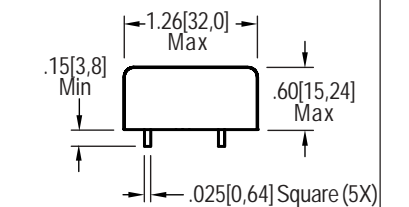
E2742

Two Tube DC to AC Inverter

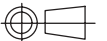


E200 Package

Package Configuration



1. Vin(+)
2. Vin(-)
3. Common
4. Vout(AC)
5. Vout(AC)



E2742

Absolute Maximum Ratings

Rating	Symbol	Value	Units
Input Voltage Range	V _{in}	-0.3 to +13.2	Vdc
Operating Temperature	T _o	-0 to +70	°C
Storage Temperature	T _{stg}	-40 to +85	°C

Recommended Operating Conditions

Rating	Symbol	Value	Units
Input Voltage	V _{in}	+6 to 13.2	Vdc

Electrical Characteristics

Unless otherwise noted V_{in} = 12.00 Volts dc and T_a = 25°C

Characteristic	Symbol	Min	Typ	Max	Units
Input Current (1) (2)	I _{in}	-	.56 .55	.65 .65	Adc
Operating Frequency (1) (2)	F _o	33 33	38 38	43 43	KHz
Minimum Output Voltage (1) (2)	V _{out (min)}	1300 1300	-	-	Vrms
Efficiency (1) (2)	h	-	87 90	-	%
Output Current (per ccft) (note 1) (1) (2)	I _{out}	-	6 6.1	-	marms
Output Voltage (When powering the Panasonic EDTCB07QLF (1) Panasonic EDTCB32QAF (2) display)	V _{out}	-	485/530 485/530	-	Vrms

After tube has been allowed to warm-up for 5 minutes

Specifications subject to change without notice.

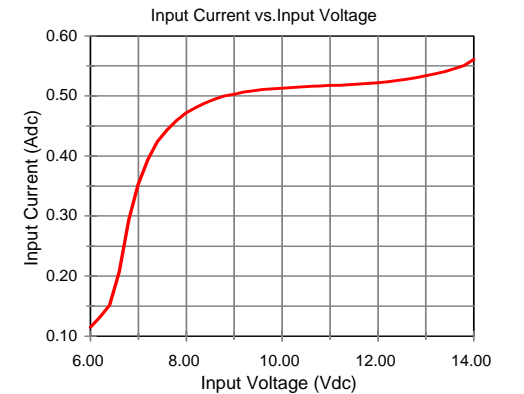
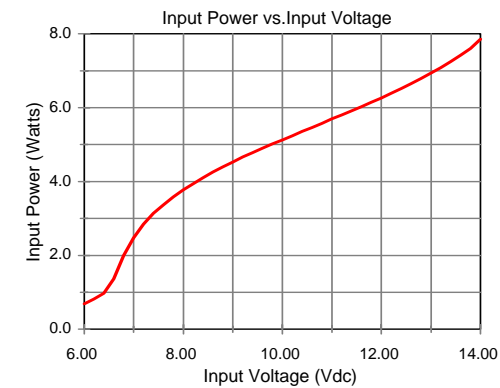
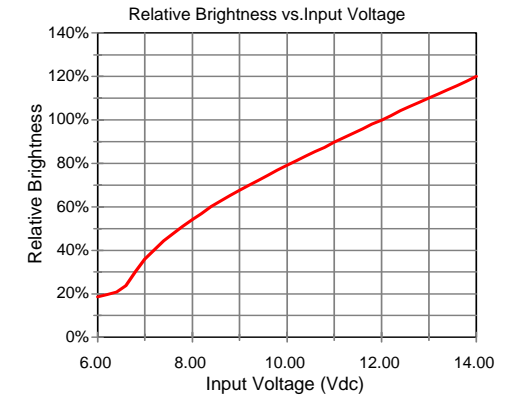
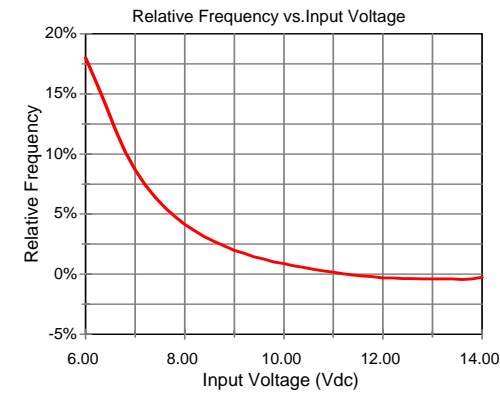
Note 1: The 6 marms is the max current specified by the referenced displays.



Endicott Research Group, Inc.

E2742

Typical Performance Curves



Endicott Research Group, Inc.