

E2649

THIS PAGE LEFT BLANK INTENTIONALLY



Endicott Research Group, Inc.

2601 Wayne St., Endicott NY 13760

607-754-9187

Made in U.S.A.



Endicott Research Group, Inc.

2601 Wayne St., Endicott NY 13760

607-754-9187 Fax 607-754-9255

http://www.ergpower.com

Specifications and Applications Information

01/22/02

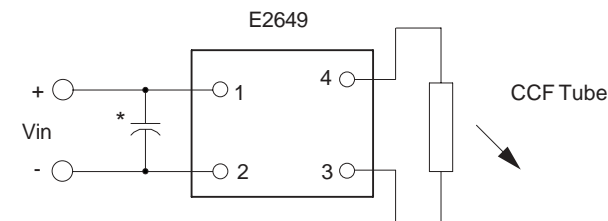
Preliminary

The E2649 (E200II Series) dc to ac inverter is specifically designed to power the Optrex F-51136NCWHU-FW-AA display to a lower than nominal brightness level from a +5 volt dc source.

The E2649's small size, encapsulated package and low input power requirements (typically 2.5 watt) makes it the ideal power source for battery applications where small size, high efficiency and reliability are critical.

This standard inverter is designed to satisfy the most common cold-cathode lighting requirements for the Optrex F-51136NCWHU-FW-AA display. Custom units, providing different inputs, outputs or package refinements are available.

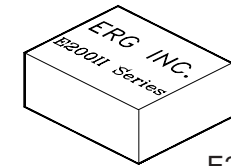
Connection Diagram



* Input bypass capacitor may be required (10uf - 100uf)

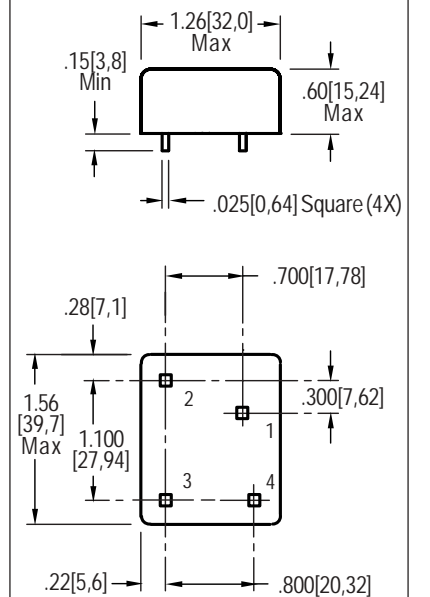
E2649

Single Tube DC to AC Inverter

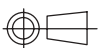


E200 Package

Package Configuration



- 1. Vin(+)
- 2. Vin(-)
- 3. Vout(AC)
- 4. Vout(AC)



E2649

Absolute Maximum Ratings

Rating	Symbol	Value	Units
Input Voltage Range	Vin	-0.3 to +6	Vdc
Operating Temperature	To	-0 to +70	°C
Storage Temperature	Tstg	-40 to +85	°C

Absolute Maximum Ratings

Rating	Symbol	Value	Units
Input Voltage	Vin	+2.5 to 5.5	Vdc

Electrical Characteristics

Unless otherwise noted Vin = 5.00 Volts dc and Ta = 25°C

Characteristic	Symbol	Min	Typ	Max	Units
Input Current	Iin	-	.49	.57	Adc
Operating Frequency	Fo	25	30	35	KHz
Minimum Output Voltage	Vout (min)	1100	-	-	Vrms
Efficiency	-	-	85	-	%
Output Current	Iout	-	5	-	marms
Output Voltage (When powering a load simulating the referenced display)	Vout	-	385	-	Vrms

After tube has be allowed to warm-up for 5 minutes

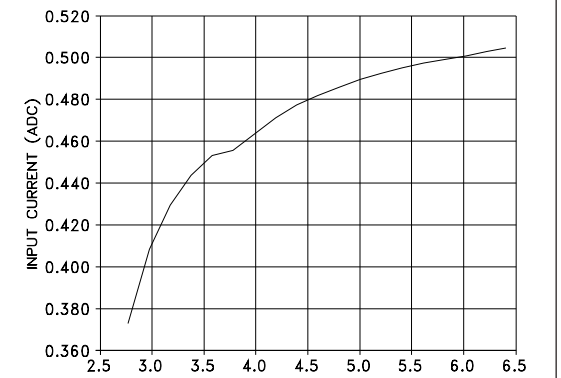
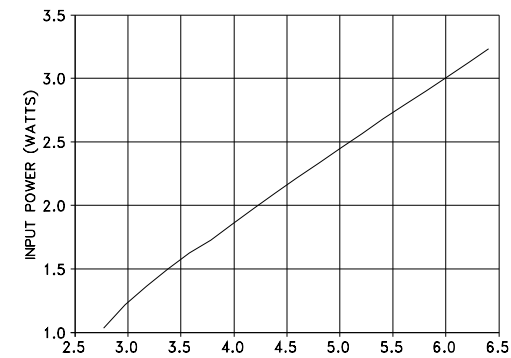
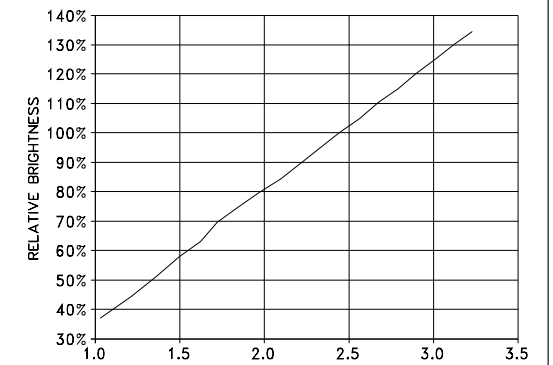
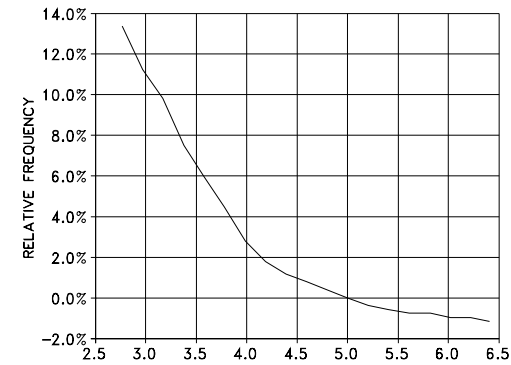
Specifications subject to change without notice.



Endicott Research Group, Inc.

E2649

Typical Performance Curves



Endicott Research Group, Inc.