

E2648

THIS PAGE LEFT BLANK INTENTIONALLY



**Endicott Research Group, Inc.**

2601 Wayne St., Endicott NY 13760

607-754-9187

Made in U.S.A.

page 4.



**Endicott Research Group, Inc.**

2601 Wayne St., Endicott NY 13760

607-754-9187 Fax 607-754-9255

<http://www.ergpower.com>

## Specifications and Applications Information

01/21/02

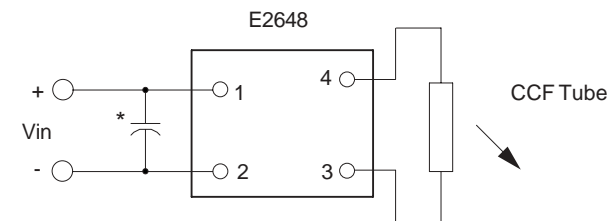
Preliminary

The E2648 (E200II Series) dc to ac inverter is specifically designed to power the Optrex F-51373GNC-SFW-AA display to a lower than nominal brightness level from a +5 volt dc source.

The E2648's small size, encapsulated package and low input power requirements (typically 1 watt) makes it the ideal power source for battery applications where small size, high efficiency and reliability are critical.

This standard inverter is designed to satisfy the most common cold-cathode lighting requirements for the Optrex F-51373GNC-SFW-AA display. Custom units, providing different inputs, outputs or package refinements are available.

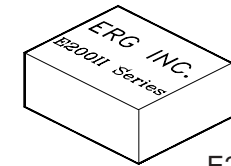
### Connection Diagram



\* Input bypass capacitor may be required (10uf - 100uf)

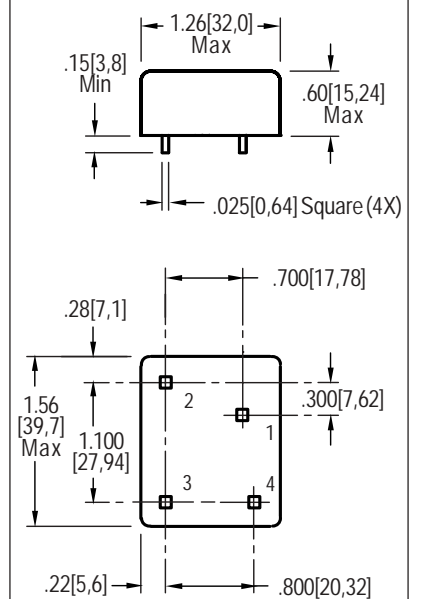
E2648

Single Tube  
DC to AC Inverter



E200 Package

### Package Configuration



1. Vin(+)
2. Vin(-)
3. Vout(AC)
4. Vout(AC)



# E2648

## Absolute Maximum Ratings

Rating	Symbol	Value	Units
Input Voltage Range	Vin	-0.3 to +6	Vdc
Operating Temperature	To	-0 to +70	°C
Storage Temperature	Tstg	-40 to +85	°C

## Absolute Maximum Ratings

Rating	Symbol	Value	Units
Input Voltage	Vin	+2.5 to 5.5	Vdc

## Electrical Characteristics

Unless otherwise noted Vin = 5.00 Volts dc and Ta = 25°C

Characteristic	Symbol	Min	Typ	Max	Units
Input Current	lin	-	.21	.24	Adc
Operating Frequency	Fo	25	30	35	KHz
Minimum Output Voltage	Vout (min)	700	-	-	Vrms
Efficiency	-	-	80	-	%
Output Current	lout	-	3.1	-	marms
Output Voltage (When powering a load simulating the referenced display)	Vout	-	280	-	Vrms

After tube has be allowed to warm-up for 5 minutes

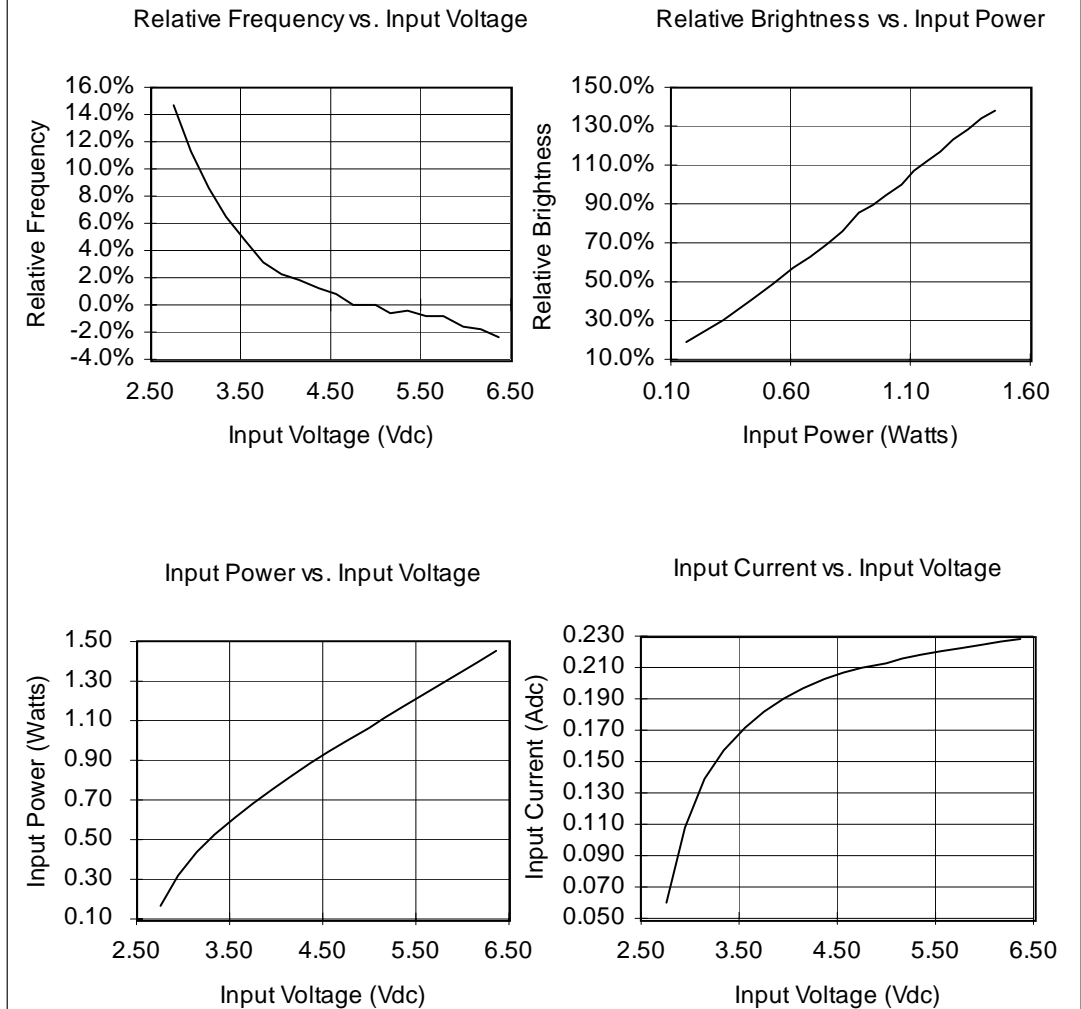
Specifications subject to change without notice.



Endicott Research Group, Inc.

# E2648

## Typical Performance Curves



Endicott Research Group, Inc.