

E2646

THIS PAGE LEFT BLANK INTENTIONALLY



Endicott Research Group, Inc.
2601 Wayne St., Endicott NY 13760
607-754-9187

Made in U.S.A.



Endicott Research Group, Inc.

2601 Wayne St., Endicott NY 13760
607-754-9187 Fax 607-754-9255
<http://www.ergpower.com>

Specifications and Applications Information

01/21/02

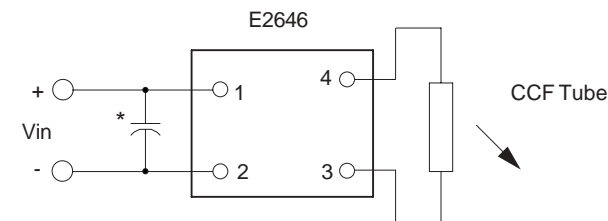
Preliminary

The E2646 (E200II Series) dc to ac inverter is specifically designed to power the Optrex DMF6104 display to a lower than nominal brightness level from a +5 volt dc source.

The E2646's small size, encapsulated package and low input power requirements (typically 1.5 watts) makes it the ideal power source for battery applications where small size, high efficiency and reliability are critical.

This standard inverter is designed to satisfy the most common cold-cathode lighting requirements for the Optrex DMF6104 display. Custom units, providing different inputs, outputs or package refinements are available.

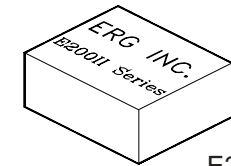
Connection Diagram



* Input bypass capacitor may be required (10uf - 100uf)

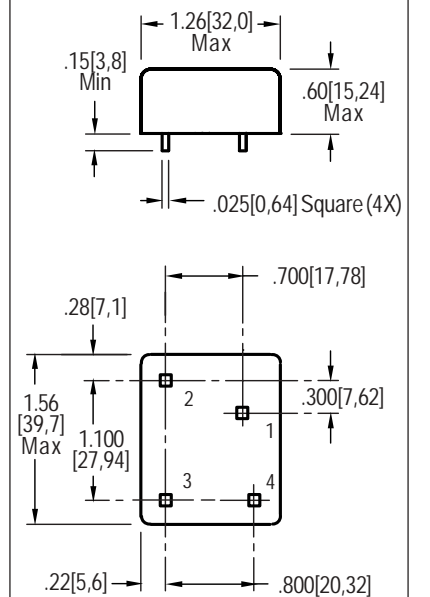
E2646

Single Tube
DC to AC Inverter

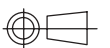


E200 Package

Package Configuration



1. Vin(+)
2. Vin(-)
3. Vout(AC)
4. Vout(AC)



E2646

Absolute Maximum Ratings

Rating	Symbol	Value	Units
Input Voltage Range	V _{in}	-0.3 to +6	Vdc
Operating Temperature	T _o	-0 to +70	°C
Storage Temperature	T _{stg}	-40 to +85	°C

Absolute Maximum Ratings

Rating	Symbol	Value	Units
Input Voltage	V _{in}	+2.5 to 5.5	Vdc

Electrical Characteristics

Unless otherwise noted V_{in} = 5.00 Volts dc and T_a = 25°C

Characteristic	Symbol	Min	Typ	Max	Units
Input Current	I _{in}	-	.36	.42	Adc
Operating Frequency	F _o	31	36	41	KHz
Minimum Output Voltage	V _{out} (min)	1250	-	-	Vrms
Efficiency	-	-	71	-	%
Output Current	I _{out}	-	5.1	-	marms
Output Voltage (When powering a load simulating the referenced display)	V _{out}	-	250	-	Vrms

After tube has be allowed to warm-up for 5 minutes

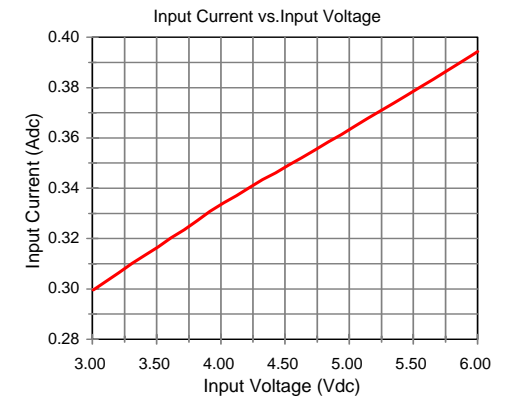
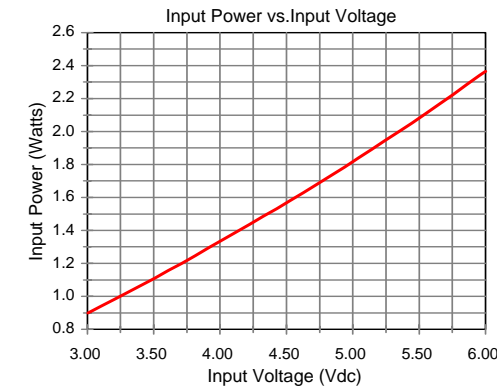
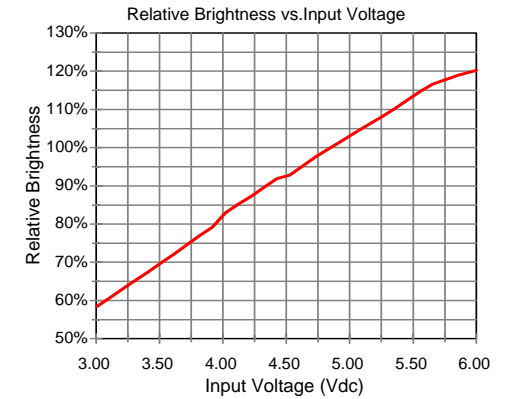
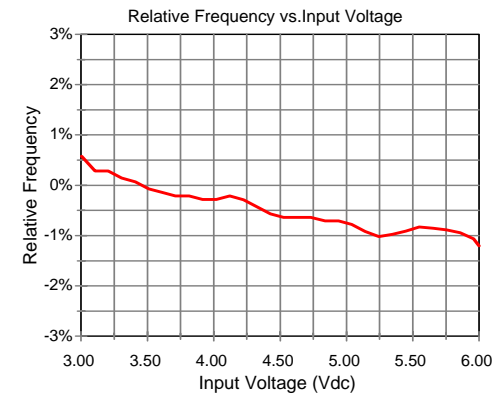
Specifications subject to change without notice.



Endicott Research Group, Inc.

E2646

Typical Performance Curves



Endicott Research Group, Inc.