



Endicott Research Group, Inc.

2601 Wayne St., Endicott, NY 13760

607-754-9187 Fax 607-754-9255

http://www.ergpower.com

E2644

Specifications and Applications Information

05/02/08

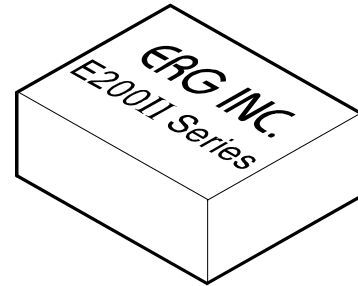
Preliminary

The E2644 (E200II Series) dc to ac inverter is specifically designed to power the Optrex DMF50961 series LCD display module to a moderate brightness level from a +5 volt dc source.

The E2644's small size and encapsulated package make it the ideal power source for applications where small size, high efficiency and reliability are critical.

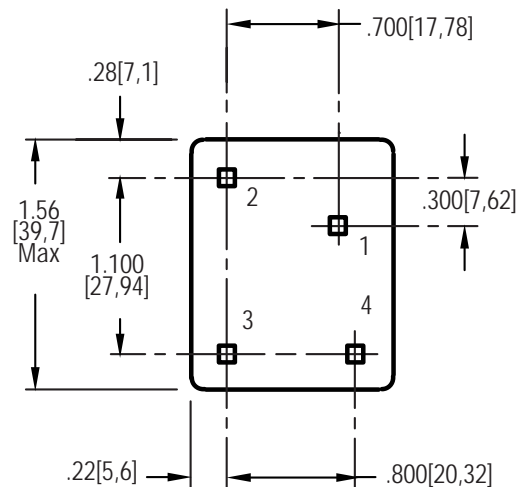
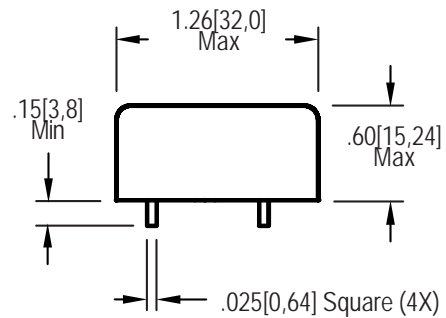
This inverter is designed to satisfy the most common cold-cathode lighting requirements for the DMF50961 display. Custom units, providing different inputs, outputs or package refinements are available.

Single Lamp DC to AC Inverter

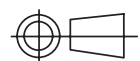


E200II Package

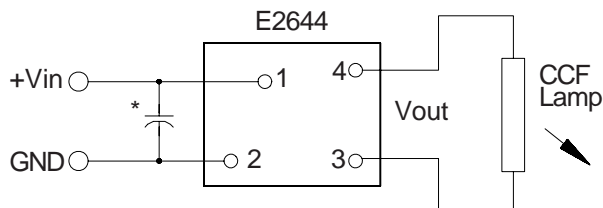
Package Configuration



1. +Vin
2. GND
3. ACreturn
4. ACout



Connection Diagram



* Low ESR type input by-pass capacitor (22 uF - 100 uF) may be required to reduce reflected ripple.

Absolute Maximum Ratings

Rating	Symbol	Value	Units
Input Voltage Range	V_{in}	-0.3 to +5.5	Vdc
Storage Temperature	T_{stg}	-40 to +85	°C

Operating Characteristics

With the referenced display and lamp warm-up of 5 minutes.
Unless otherwise noted $V_{in} = 5.00$ Volts dc and $T_a = 25^{\circ}\text{C}$.

Characteristic	Symbol	Min	Typ	Max	Units
Input Voltage	V_{in}	+4.50	+5.00	+5.25	Vdc
Component surface Temperature (note 1)	T_s	-20	-	+80	°C
Input Current (note 2)	I_{in}	-	0.43	0.55	Adc
Operating Frequency	F_o	33	38	43	kHz
Minimum Output Voltage (note 3)	V_{out} (min)	1350	-	-	Vrms
Efficiency	h	-	74	-	%
Output Current (per lamp)	I_{out}	-	5.0	-	mArms
Output Voltage	V_{out}	-	320	-	Vrms

Specifications subject to change without notice.

(Note 1) Surface temperature must not exceed 80 degrees C; thermal management actions may be required.

(Note 2) Input current in excess of maximum may indicate a load/inverter mismatch condition, which can result in reduced reliability. Please contact ERG technical support.

(Note 3) Provided data is not tested but guaranteed by design.

Application Notes:

- 1) Printed circuit boards to be free of traces beneath the inverter.
- 2) The minimum distance from high voltage areas of the inverter to any conductive material should be .12 inches per kilovolt of starting voltage.
- 3) Contact ERG for possible exceptions.



Endicott Research Group, Inc.

2601 Wayne St., Endicott, NY 13760

607-754-9187 Fax 607-754-9255

<http://www.ergpower.com>

Made in U.S.A.

page 2 of 2.