

E2531

THIS PAGE LEFT BLANK INTENTIONALLY



Endicott Research Group, Inc.
2601 Wayne St., Endicott NY 13760
607-754-9187



Endicott Research Group, Inc.
2601 Wayne St., Endicott NY 13760
607-754-9187 Fax 607-754-9255
<http://www.ergpower.com>

Specifications and Applications Information

03/26/01

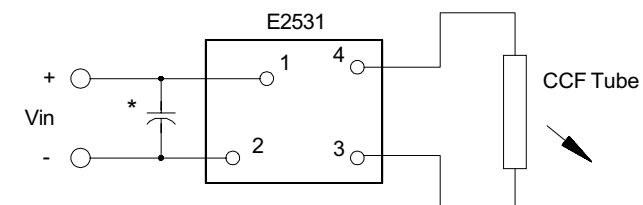
Preliminary

The ERG E2531 (E200II Series) dc to ac inverter is specifically designed to power the Hantronix HDM3224-1 LCD display to a moderate brightness level from a +5 volt dc source.

The E2531's small size, encapsulated package makes it the ideal power source for applications where small size, high efficiency and reliability are critical.

This inverter is designed to satisfy the most common cold-cathode lighting requirements for the Hantronix HDM3224-1 display. Custom units, providing different inputs, outputs or package refinements are available.

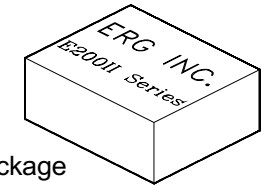
Connection Diagram



* Input bypass capacitor may be required (10uf - 100uf)

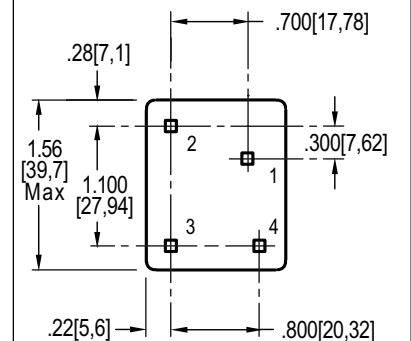
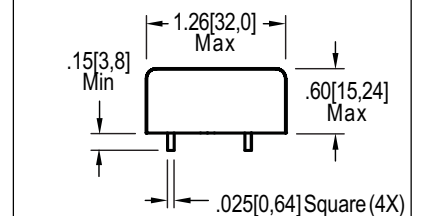
E2531

Single Tube DC to AC Inverter

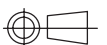


E200 Package

Package Configuration



- 1. Vin(+)
- 2. Vin(-)
- 3. Vout(AC)
- 4. Vout(AC)



Absolute Maximum Ratings

Rating	Symbol	Value	Units
Input Voltage Range	V _{in}	-0.3 to +5.5	Vdc
Operating Temperature	T _o	-20 to +70	°C
Storage Temperature	T _{stg}	-40 to +85	°C

Recommended Operating Conditions

Rating	Symbol	Value	Units
Input Voltage	V _{in}	+2.5 to 5.5	Vdc

Electrical Characteristics

Unless otherwise noted V_{in} = 5.00 Volts dc and T_a = 25 °C

Characteristic	Symbol	Min	Typ	Max	Units
Input Current	I _{in}	-	.36	.43	Adc
Operating Frequency	F _o	31	36	41	KHz
Minimum Output Voltage	V _{out} (min)	1000	-	-	Vrms
Efficiency	η	-	80	-	%
Output Current	I _{out}	-	5.2	-	marms
Output Voltage (When Powering a load simulating the referenced display)	V _{out}	-	276	-	Vrms

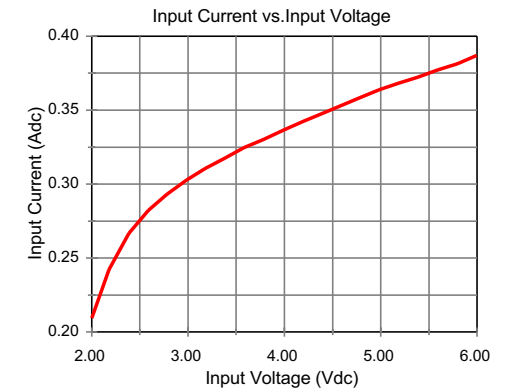
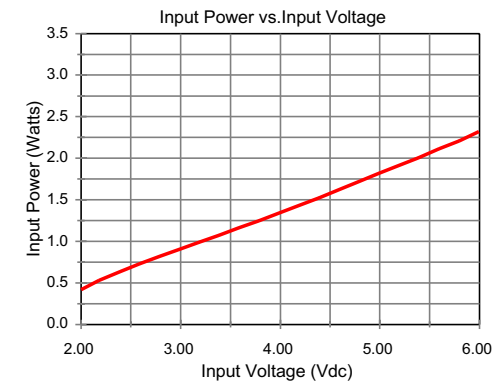
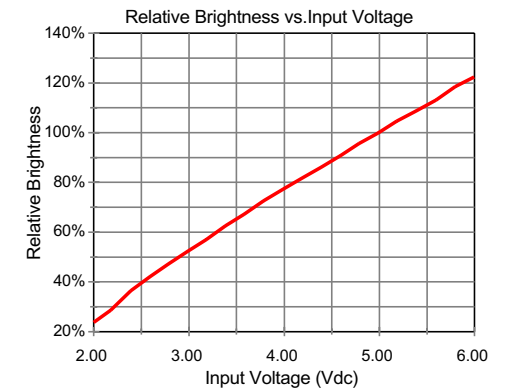
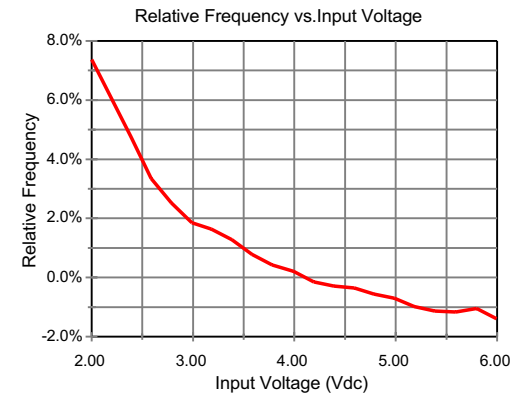
After tube has be allowed to warm-up for 5 minutes

Specifications subject to change without notice.



Endicott Research Group, Inc.

Typical Performance Curves



Endicott Research Group, Inc.