



Endicott Research Group, Inc.

2601 Wayne St., Endicott NY 13760

607-754-9187 Fax 607-754-9255

http://www.ergpower.com

E2520

Specifications and Applications Information

04/06/01

Preliminary

The E2520 (E200II Series) dc to ac inverter is specifically designed to power the Emerging display to a moderate brightness level from a +12 volt dc source.

The E2520's small size, encapsulated package makes it the ideal power source for applications where small size, high efficiency and reliability are critical.

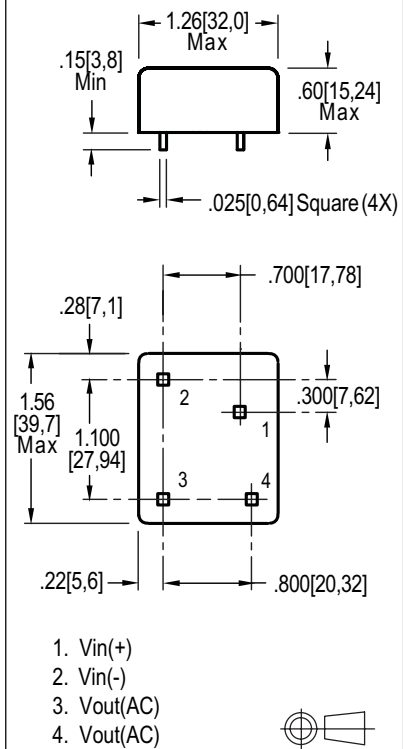
This inverter is designed to satisfy the most common cold-cathode lighting requirements for the Emerging display. Custom units, providing different inputs, outputs or package refinements are available.

Single Tube
DC to AC Inverter

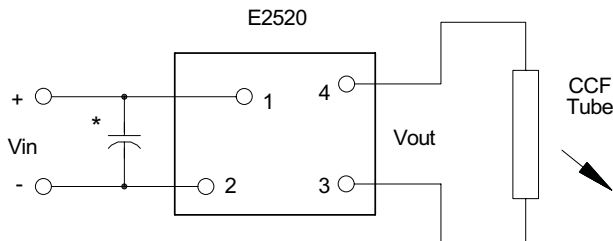


E200II Package

Package Configuration



Connection Diagram



* Input bypass capacitor may be required (10uf - 100uf)

Electrical Characteristics (Nominal)

Input Current	.17 Adc
No Load Output Voltage	1000 Vrms
Output Current	5.0 mArms
Tube Voltage	300 Vrms
($V_{IN} = 12.0$ Volts DC, $T_A = 25$ °C)	