

E2448

THIS PAGE LEFT BLANK INTENTIONALLY



Endicott Research Group, Inc.  
2601 Wayne St., Endicott NY 13760  
607-754-9187



Endicott Research Group, Inc.  
2601 Wayne St., Endicott NY 13760  
607-754-9187 Fax 607-754-9255  
<http://www.ergpower.com>

## Specifications and Applications Information

10/12/00

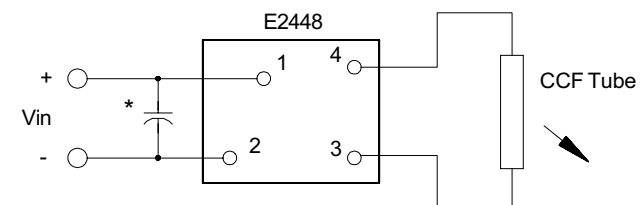
Preliminary

The ERG E2448 (E200II Series) dc to ac inverter is specifically designed to power the Sharp LQ038Q5DR01 LCD display module to a moderate brightness level from a +5 volt dc source.

The E2448's small size, encapsulated package makes it the ideal power source for applications where small size, high efficiency and reliability are critical.

This inverter is designed to satisfy the most common cold-cathode lighting requirements for the Sharp LQ038Q5DR01 display. Custom units, providing different inputs, outputs or package refinements are available.

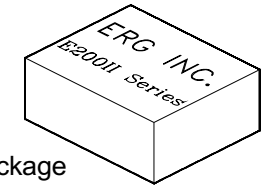
### Connection Diagram



\* Input bypass capacitor may be required (10uf - 100uf)

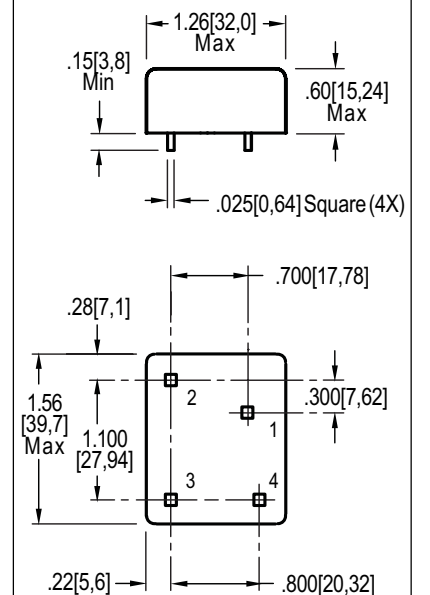
E2448

## Single Tube DC to AC Inverter

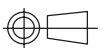


E200 Package

### Package Configuration



1. Vin(+)
2. Vin(-)
3. Vout(AC)
4. Vout(AC)



**Absolute Maximum Ratings**

Rating	Symbol	Value	Units
Input Voltage Range	Vin	-0.3 to +5.5	Vdc
Operating Temperature	To	0 to +70	°C
Storage Temperature	Tstg	-40 to +85	°C

**Recommended Operating Conditions**

Rating	Symbol	Value	Units
Input Voltage	Vin	+2.5 to 5.5	Vdc

**Electrical Characteristics**

Unless otherwise noted Vin = 5.00 Volts dc and Ta = 25 °C

Characteristic	Symbol	Min	Typ	Max	Units
Input Current	lin	-	.73	.85	Adc
Operating Frequency	Fo	27	32	37	KHz
Minimum Output Voltage	Vout (min)	1500	-	-	Vrms
Efficiency	$\eta$	-	83	-	%
Output Current	Iout	-	5.7	-	marms
Output Voltage (When Powering a load simulating the referenced display)	Vout	-	530	-	Vrms

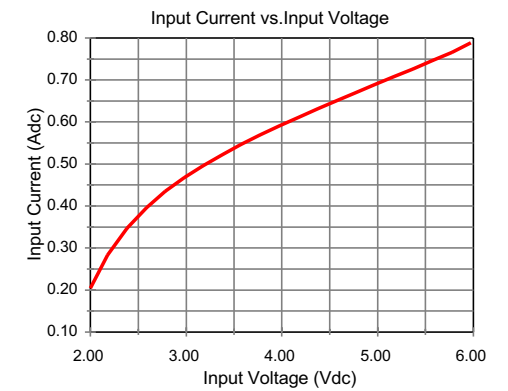
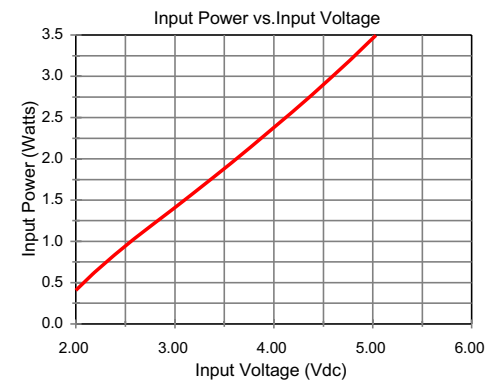
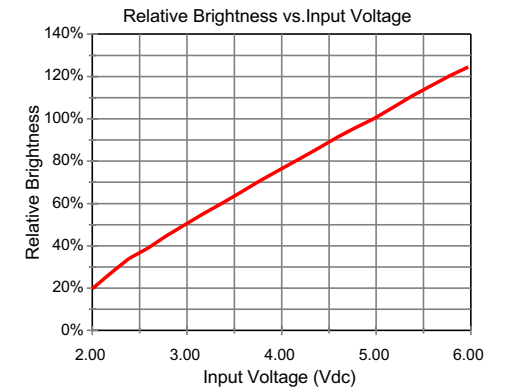
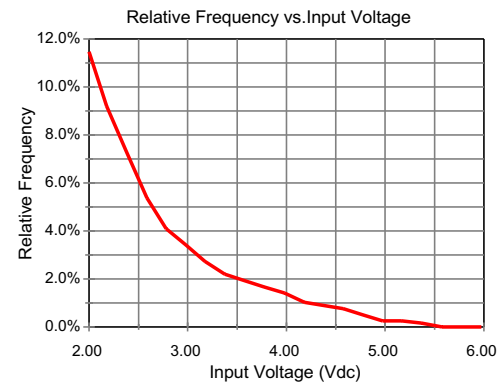
After tube has be allowed to warm-up for 5 minutes

Specifications subject to change without notice.



Endicott Research Group, Inc.

**Typical Performance Curves**



Endicott Research Group, Inc.