

E2423

THIS PAGE LEFT BLANK INTENTIONALLY



Endicott Research Group, Inc.
2601 Wayne St., Endicott NY 13760
607-754-9187



Endicott Research Group, Inc.
2601 Wayne St., Endicott NY 13760
607-754-9187 Fax 607-754-9255
<http://www.ergpower.com>

Specifications and Applications Information

07/20/00

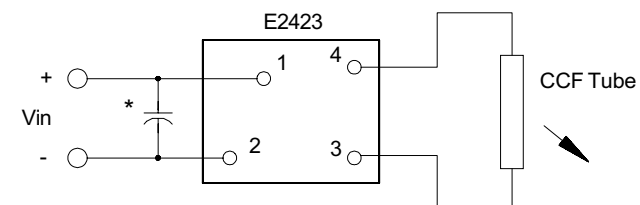
Preliminary

The ERG E2423 (E200II Series) dc to ac inverter is specifically designed to power the Hitachi LMG7525-RPFF LCD display module to a moderate brightness level from a +5 volt dc source.

The E2423's small size, encapsulated package and low input power requirements (typically 1.8 watts) makes it the ideal power source for battery applications where small size, high efficiency and reliability are critical.

This standard inverter is designed to satisfy the most common cold-cathode lighting requirements for the LMG7525-RPFF display. Custom units, providing different inputs, outputs or package refinements are available.

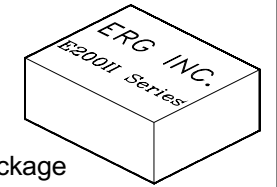
Connection Diagram



* Input bypass capacitor may be required (10uf - 100uf)

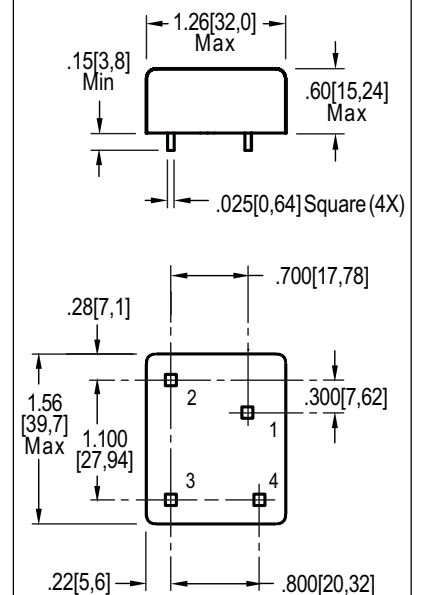
E2423

Single Tube DC to AC Inverter

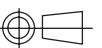


E200 Package

Package Configuration



- 1. Vin(+)
- 2. Vin(-)
- 3. Vout(AC)
- 4. Vout(AC)



Absolute Maximum Ratings

Rating	Symbol	Value	Units
Input Voltage Range	V _{in}	-0.3 to +6.0	Vdc
Operating Temperature	T _o	0 to +70	°C
Storage Temperature	T _{stg}	-40 to +85	°C

Recommended Operating Conditions

Rating	Symbol	Value	Units
Input Voltage	V _{in}	+2.5 to 5.5	Vdc

Electrical Characteristics

Unless otherwise noted V_{in} = 5.00 Volts dc and T_a = 25 °C

Characteristic	Symbol	Min	Typ	Max	Units
Input Current	I _{in}	-	0.36	0.4	A _{dc}
Operating Frequency	F _o	28	33	38	KHz
Minimum Output Voltage	V _{out} (min)	1100	-	-	V _{rms}
Efficiency	η	-	83	-	%
Output Current	I _{out}	-	5	-	mA _{rms}
Output Voltage (When Powering a Hitachi LMG7525RPF display)	V _{out}	-	300	-	V _{rms}

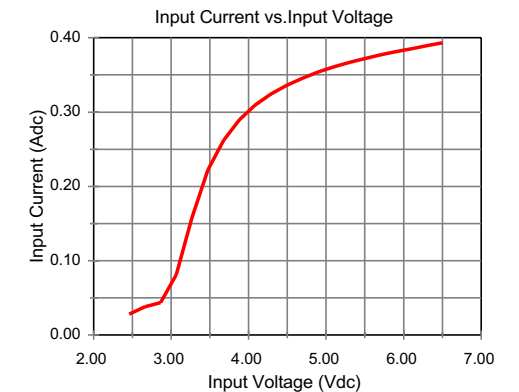
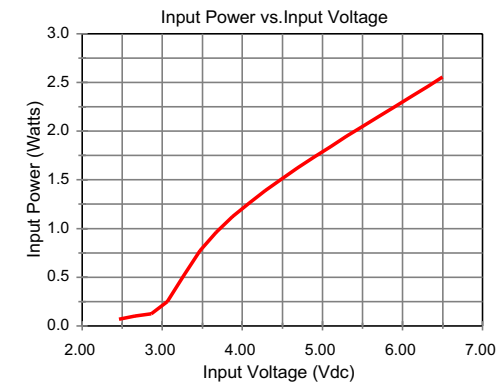
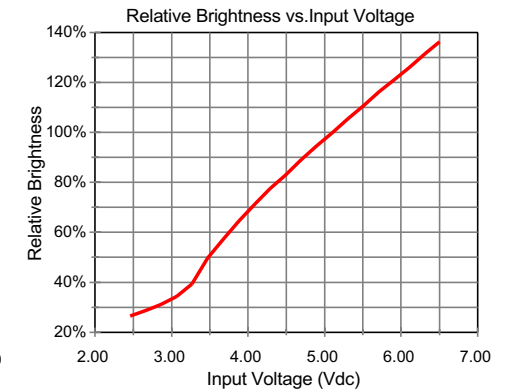
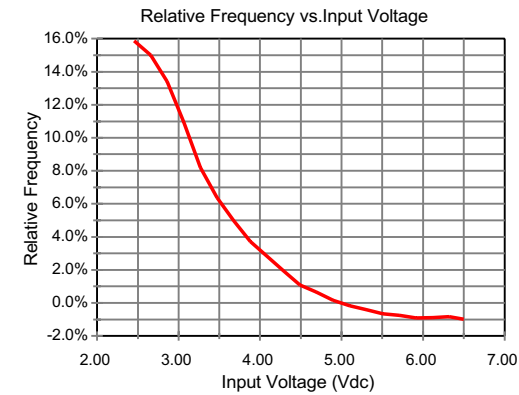
After tube has be allowed to warm-up for 5 minutes

Specifications subject to change without notice.



Endicott Research Group, Inc.

Typical Performance Curves



Endicott Research Group, Inc.