

E2388

THIS PAGE LEFT BLANK INTENTIONALLY



Endicott Research Group, Inc.

2601 Wayne St., Endicott NY 13760

607-754-9187

Made in U.S.A.



Endicott Research Group, Inc.

2601 Wayne St., Endicott NY 13760

607-754-9187 Fax 607-754-9255

<http://www.ergpower.com>

Specifications and Applications Information

09/05/02

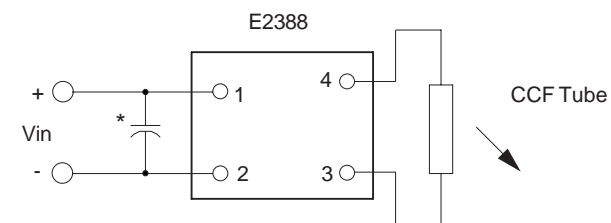
Preliminary

The E2388 (E200II Series) dc to ac inverter is specifically designed to power the LG LC064N1/LP064V1 LCD display module to moderate brightness level from a +5 Volt DC source.

The E2388's small size, encapsulated package makes it the ideal power source for applications where small size, high efficiency and reliability are critical.

This inverter is designed to satisfy the most common cold-cathode lighting requirements for the LG LC064N1/LP064V1 display. Custom units, providing different inputs, outputs or package refinements are available.

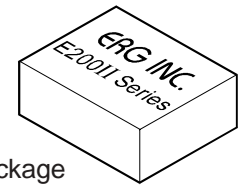
Connection Diagram



* Input bypass capacitor may be required (10uf - 100uf)

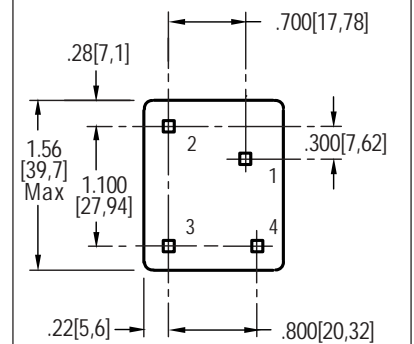
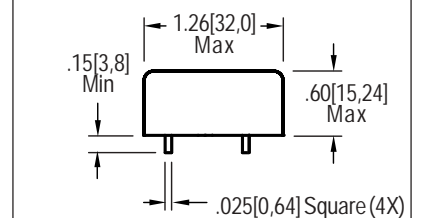
E2388

Single Tube
DC to AC Inverter



E200II Package

Package Configuration



1. Vin(+)
2. Vin(-)
3. Vout(AC)
4. Vout(AC)



Absolute Maximum Ratings

Rating	Symbol	Value	Units
Input Voltage Range	V _{in}	-0.3 to +5.5	Vdc
Operating Temperature	T _o	-0 to +70	°C
Storage Temperature	T _{stg}	-40 to +85	°C

Absolute Maximum Ratings

Rating	Symbol	Value	Units
Input Voltage	V _{in}	+2.5 to 5.5	Vdc

Electrical Characteristics

Unless otherwise noted V_{in} = 5.00 Volts dc and T_a = 25°C

Characteristic	Symbol	Min	Typ	Max	Units
Input Current	I _{in}	-	.47	.55	Adc
Operating Frequency	F _o	32	37	42	KHz
Minimum Output Voltage	V _{out} (min)	1000	-	-	Vrms
Efficiency	-	-	79	-	%
Output Current per CCFT	I _{out}	-	5.2	-	marms
Output Voltage (When powering a load simulating the referenced display)	V _{out}	-	355	-	Vrms

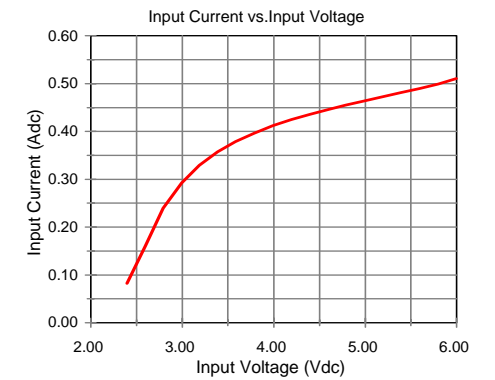
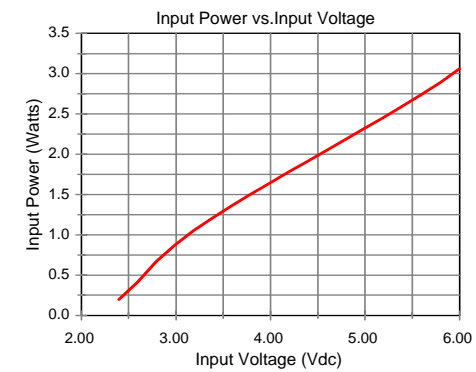
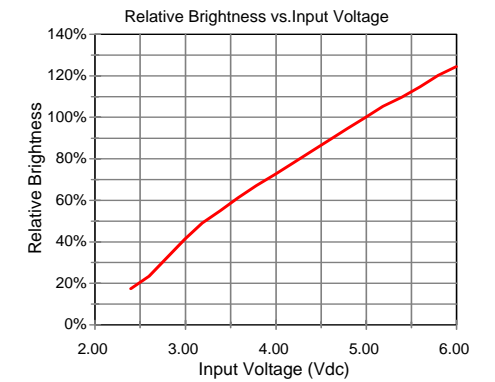
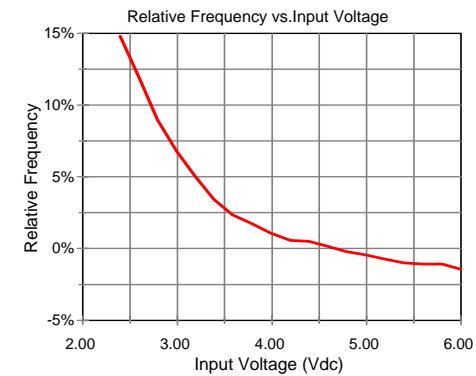
After tube has be allowed to warm-up for 5 minutes

Specifications subject to change without notice.



Endicott Research Group, Inc.

Typical Performance Curves



Endicott Research Group, Inc.