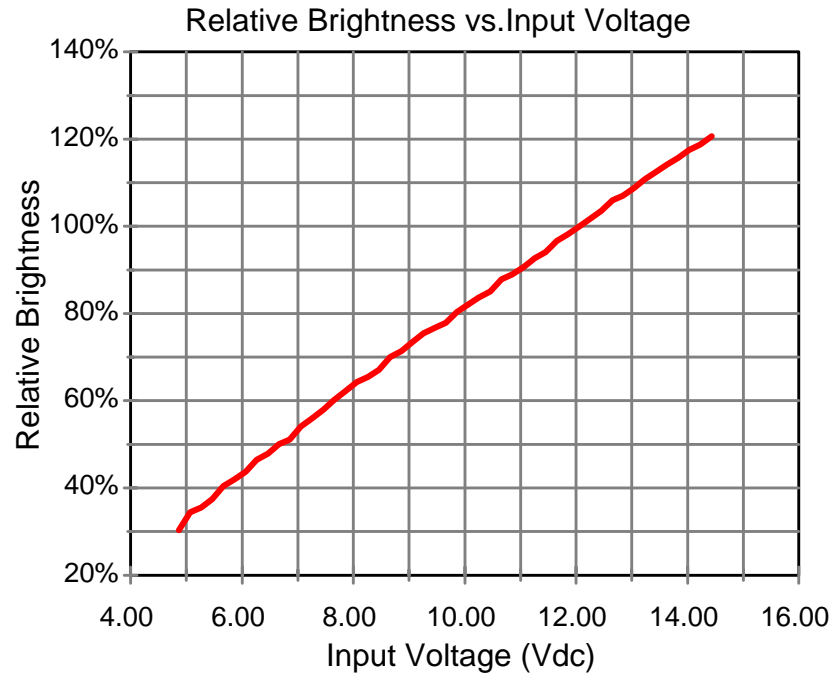


E2346



**Endicott Research Group, Inc.**  
 2601 Wayne St., Endicott NY 13760  
 607-754-9187

Made in U.S.A.



**Endicott Research Group, Inc.**  
 2601 Wayne St., Endicott NY 13760  
 607-754-9187 Fax 607-754-9255  
<http://www.ergpower.com>

## Specifications and Applications Information

2/03/00

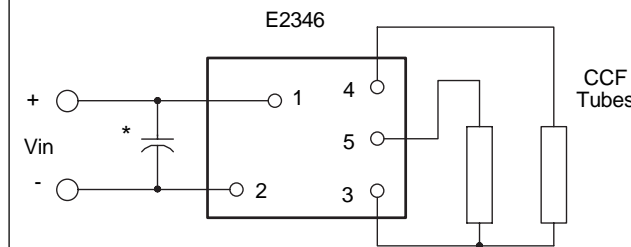
Preliminary

The E2346 (E200II Series) dc to ac inverter is specifically designed to power the Toshiba LTM10C209A LCD display to a moderate brightness level from a +12 volt dc source.

The E2346's small size and encapsulated package makes it the ideal power source for applications where size, high efficiency and reliability are critical.

This standard inverter is designed to satisfy the most common cold-cathode lighting requirements for the LTM10C209A display. Custom units, providing different inputs, outputs or package refinements are available.

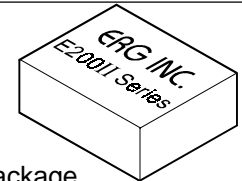
### Connection Diagram



\* Input bypass capacitor may be required (10uf - 100uf)

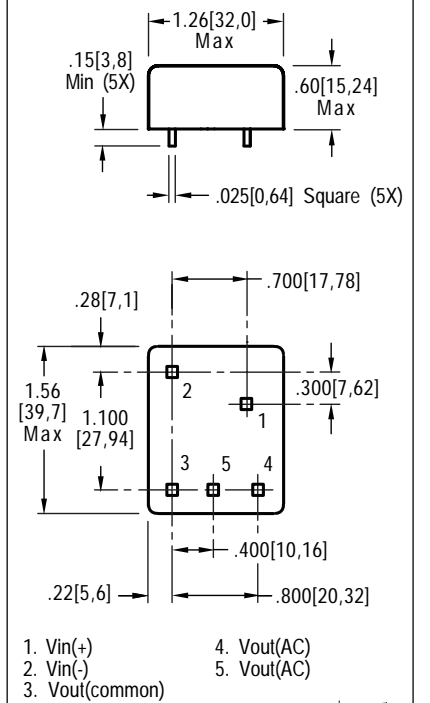
E2346

Two Tube  
DC to AC Inverter



E200 Package

### Package Configuration



- 1. Vin(+)
- 2. Vin(-)
- 3. Vout(common)
- 4. Vout(AC)
- 5. Vout(AC)



# E2346

## Absolute Maximum Ratings

Rating	Symbol	Value	Units
Input Voltage Range	$V_{in}$	-0.3 to +13.2	Vdc
Operating Temperature	$T_o$	0 to +70	°C
Storage Temperature	$T_{stg}$	-40 to +85	°C

## Recommended Operating Conditions

Rating	Symbol	Value	Units
Input Voltage	$V_{in}$	+5 to 13.2	Vdc

## Electrical Characteristics

Unless otherwise noted  $V_{in} = 12.00$  Volts dc and  $T_a = 25$  °C

Characteristic	Symbol	Min	Typ	Max	Units
Input Current	$I_{in}$	-	.60	.68	Adc
Operating Frequency	$F_o$	24	28	32	KHz
Minimum Output Voltage	$V_{out} (min)$	1500	-	-	$V_{rms}$
Efficiency	$\eta$	-	92	-	%
Output Current (per tube)	$I_{out}$	-	6	-	marms
Output Voltage (when Powering a load equivalent to the referenced display)	$V_{out}$	-	550	-	$V_{rms}$

After tube has been allowed to warm-up for 5 minutes

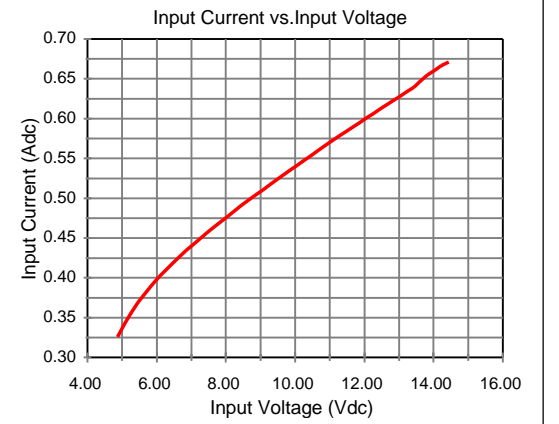
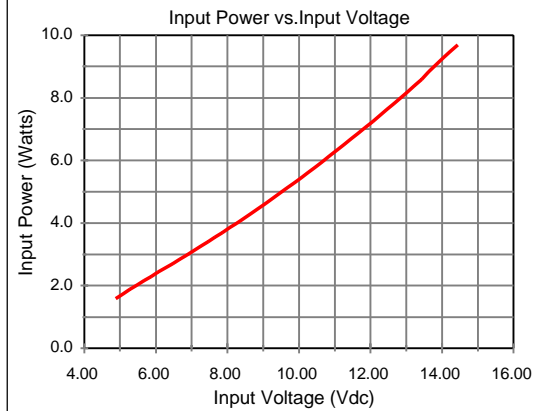
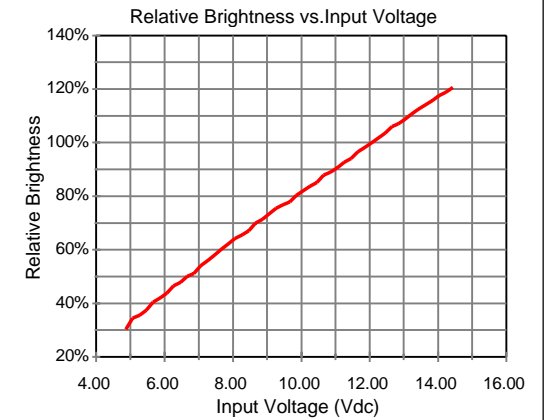
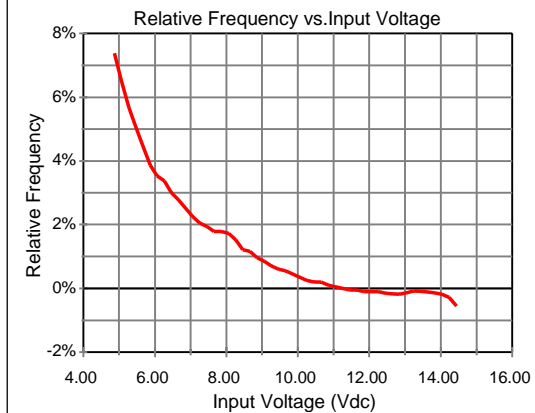
Specifications subject to change without notice



Endicott Research Group, Inc.

# E2346

## Typical Performance Curves



Endicott Research Group, Inc.