



**Endicott Research Group, Inc.**

2601 Wayne St., Endicott NY 13760

607-754-9187 Fax 607-754-9255

http://www.ergpower.com

**E1972**

## Specifications and Applications Information

02/26/97

Preliminary

The E1972 (E200II Series) dc to ac inverter is specifically designed to power the Sharp LQ10D367 LCD display to a moderate brightness level from a +5 volt dc source.

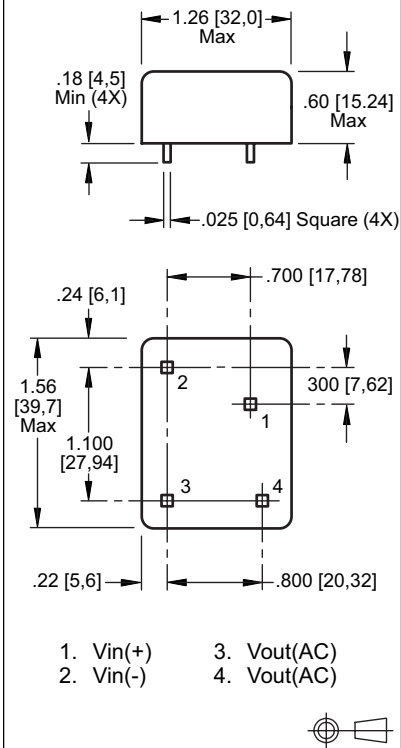
This inverter is designed to satisfy the most common cold-cathode lighting requirements for the Sharp LQ10D367 display. Custom units, providing different inputs, outputs or package refinements are available.

**Single Tube  
DC to AC Inverter**

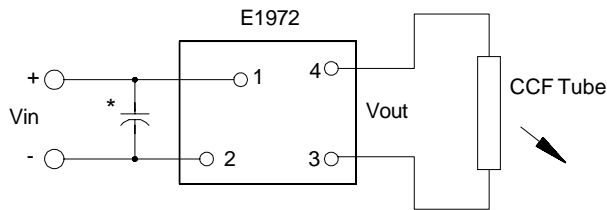


E200II Package

### Package Configuration



### Connection Diagram



\* Input bypass capacitor may be required (10uf - 100uf)

### Electrical Characteristics (Nominal)

Input Current	.71 Adc
No Load Output Voltage	1400 Vrms
Output Current	6.0 mArms
Tube Voltage	500 Vrms
( $V_{IN} = 5.0$ Volts DC, $T_A = 25$ °C)	