

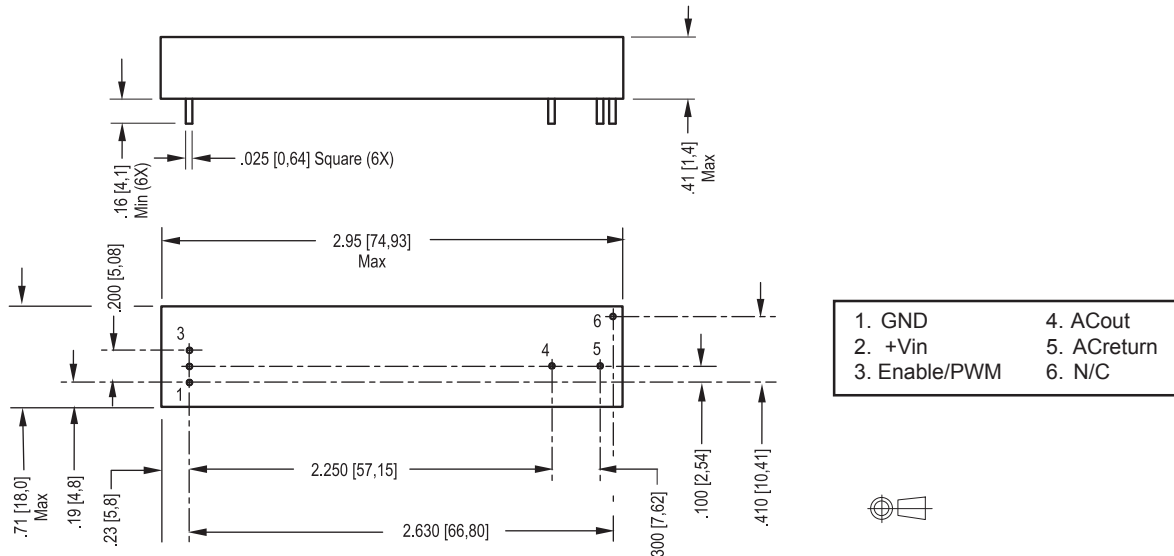
# D Series



## 5 Volt Input Dc to Ac Inverter

## D05SE50

The D05SE50 is a generic dc to ac inverter designed to generate 5 mArms into a 270 - 370 Volt load (CCFL) from a nominal 5 Volt dc source.



This view is from the top looking through pcb. It depicts layout for inverter to plug into.

### PHYSICAL SPECIFICATIONS

Size:	.71" x 2.95" x .41"
Weight:	25 grams
Component Surface Temperature:	-20° to +80°C
Storage Temperature:	-40° to +85°C
Humidity:	95% RH (Non-Condensing) Max

Characteristics	Value	Units	Note(s)
Input Voltage	4.50 - 5.25	Vdc	
Input Current	0.47 typ	Adc	$R_L = 64 \text{ kOhms}$
Minimum No Load Output Voltage	1100	Vrms	$V_{in} = 5.00 \text{ Vdc}$
Frequency	38 typ	kHz	$V_{in} = 5.00 \text{ Vdc}$
Output Current	5.0	mArms	$R_L = 64 \text{ kOhms}$
Efficiency	70	%	Typical

The maximum input current (which indicates an overload condition) is 1.0 Adc maximum.

### FEATURES

Low Profile  
PCB Mountable  
High efficiency  
Encapsulated

## Endicott Research Group, Inc.

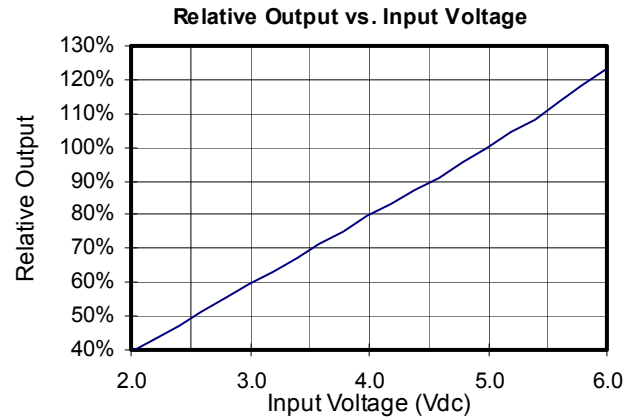
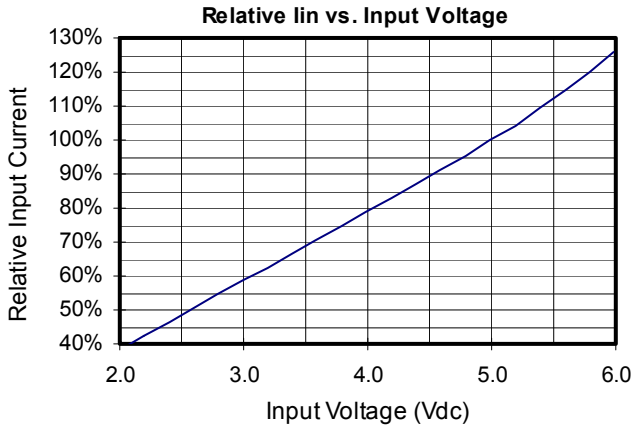
2601 Wayne St., Endicott, NY 13760  
607-754-9187 Fax 607-754-9255  
<http://www.ergpower.com>

Inverters specifically designed to match most popular LCD modules are also available. Contact your authorized distributor or ERG direct.

# Connection and Application Information

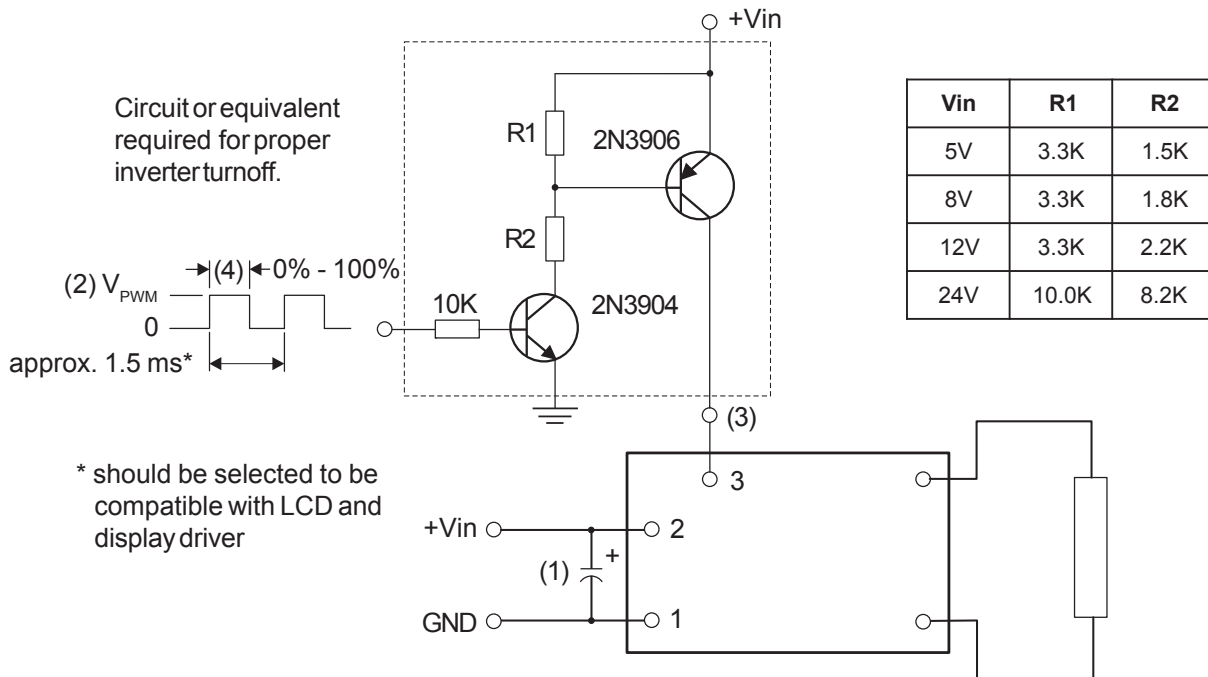
## 5 Volt Input Dc to Ac Inverter

# D05SE50



### PWM Dimming

### Required User Enable/Disable Interface Circuit



- (1) Low ESR type input by-pass capacitor (22 uf - 100 uf) may be required to reduce reflected ripple.
- (2) V<sub>PWM</sub> from 2.4V to less than or equal to +V<sub>in</sub>.
- (3) Full brightness without PWM control requires that pin 3 be tied to +V<sub>in</sub>. Pin 3 must be at 0V to turn off.
- (4) Duty Cycle 0% - 100%.



Endicott Research Group, Inc.

2601 Wayne St., Endicott, NY 13760  
607-754-9187 Fax 607-754-9255  
<http://www.ergpower.com>

Specifications are subject to change without notice.

02/09/11

