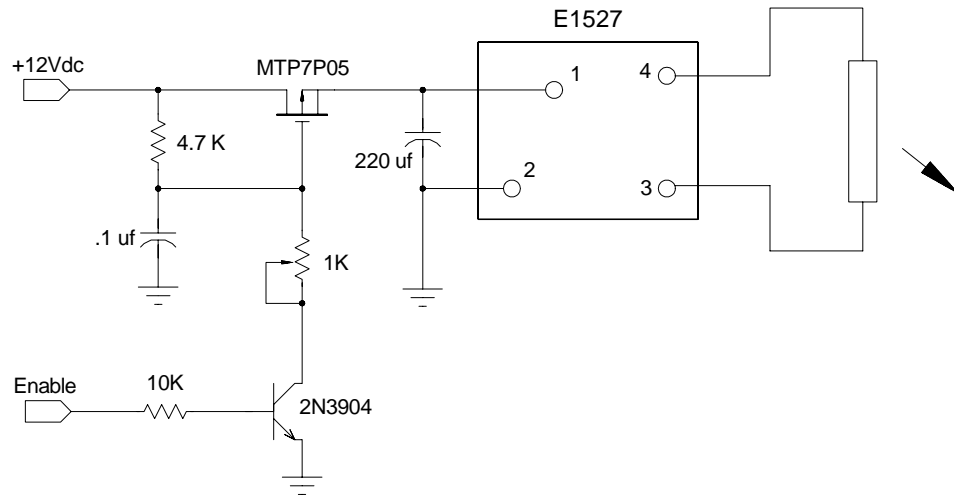
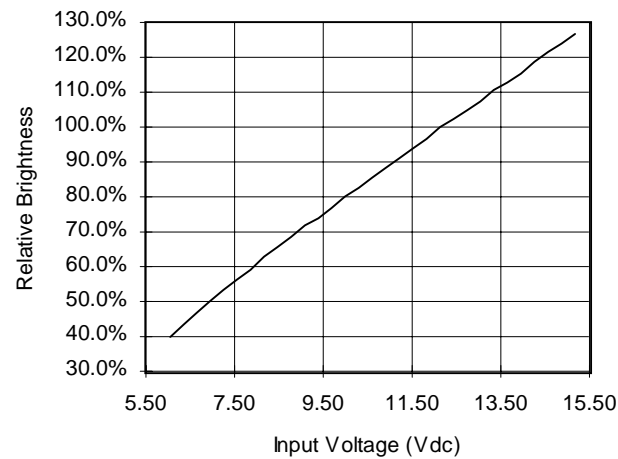


E1527



Optional Dimming Circuit with Enable

Relative Brightness vs. Input Voltage



Endicott Research Group, Inc.

2601 Wayne St., Endicott NY 13760

607-754-9187

Made in U.S.A.



Endicott Research Group, Inc.

2601 Wayne St., Endicott NY 13760

607-754-9187 Fax 607-754-9255

<http://www.ergpower.com>

Specifications and Applications Information

3/31/94

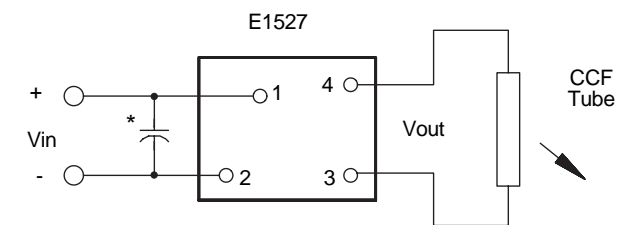
Preliminary

The E1527 (E200II Series) dc to ac inverter is specifically designed to power the Sharp LM32K10 LCD VGA display to a moderate brightness level from a +12 volt dc source.

The E1527's small size, encapsulated package and low input power requirements (typically 1.75 watts) makes it the ideal power source for battery applications where small size, high efficiency and reliability are critical.

This standard inverter is designed to satisfy the most common cold-cathode lighting requirements for the LM32K10 display. Custom units, providing different inputs, outputs or package refinements are available.

Connection Diagram



* Input bypass capacitor may be required (10uf - 100uf)

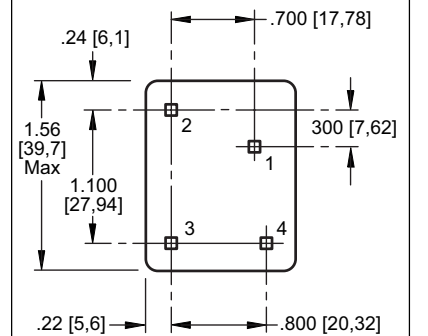
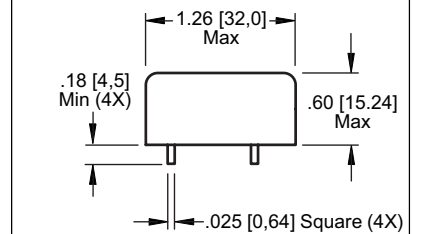
E1527

E1527 Single Tube DC to AC Inverter



E200II Package

Package Configuration



- 1. Vin(+)
- 2. Vin(-)
- 3. Vout(AC)
- 4. Vout(AC)



Absolute Maximum Rating

Rating	Symbol	Value	Units
Input Voltage Range	Vin	-0.3 to +15	Vdc
Operating Temperature	To	0 to +70	°C
Storage Temperature	Tstg	-40 to +85	°C

Recommended Operating Conditions

Rating	Symbol	Value	Units
Input Voltage	Vin	+6 to 13.2	Vdc

Electrical Characteristics

Unless otherwise noted Vin = 12.00 Volts dc and Ta = 25°C

Characteristic	Symbol	Min	Typ	Max	Units
Input Current	Iin	-	0.143	0.165	Adc
Operating Frequency	Fo	31	36	41	KHz
Minimum Output Voltage	Vout (min)	1100	-	-	Vrms
Efficiency	η	-	86	-	%
Output Current	Iout	-	5.25	-	marms
Output Voltage (When Powering a Sharp LM32K10 display)	Vout	-	285	-	Vrms

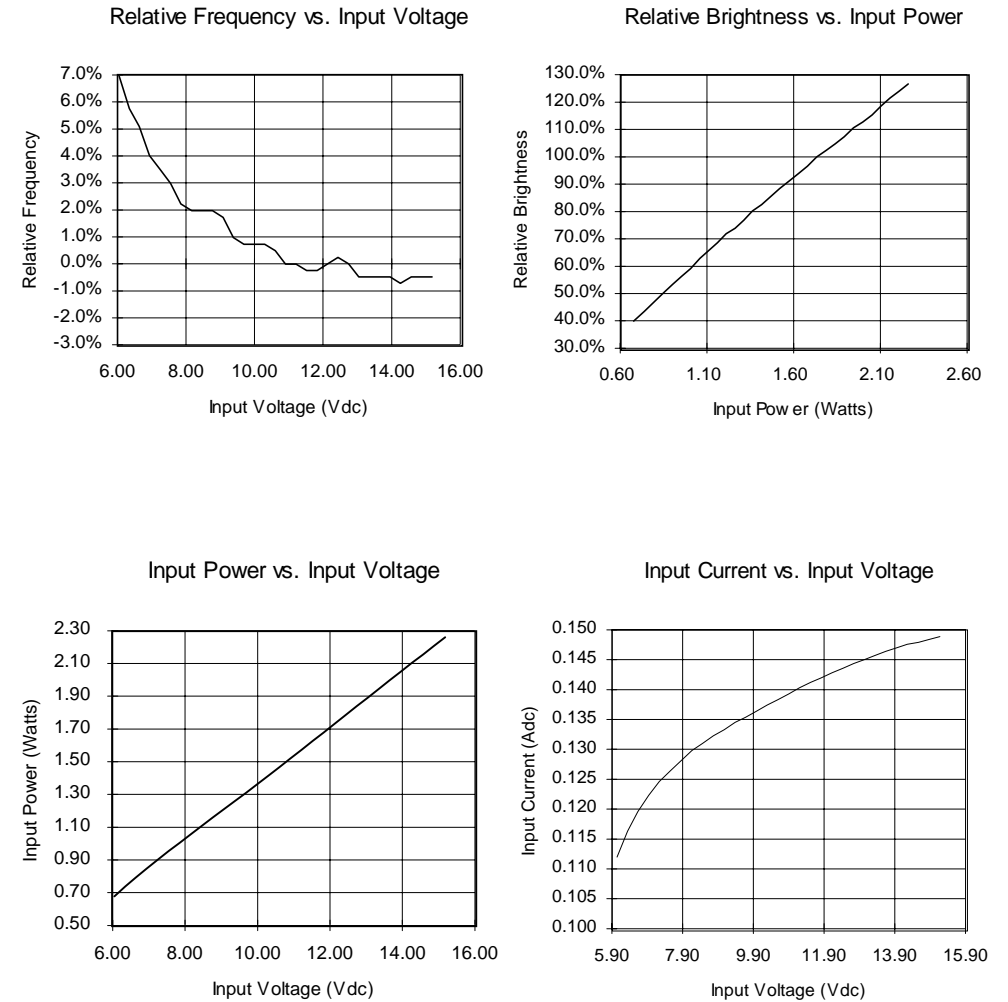
After tube has been allowed to warm-up for 5 minutes

Specifications subject to change without notice



Endicott Research Group, Inc.

Typical Performance Curves



Endicott Research Group, Inc.