

D Series



12 Volt Input Dc to Ac Inverter

D12EE60

The D12EE60 is a generic dc to ac inverter designed to generate 6 mArms into a 400 - 600 volt load (CCFL) from a nominal 12 volt dc source.

FEATURES

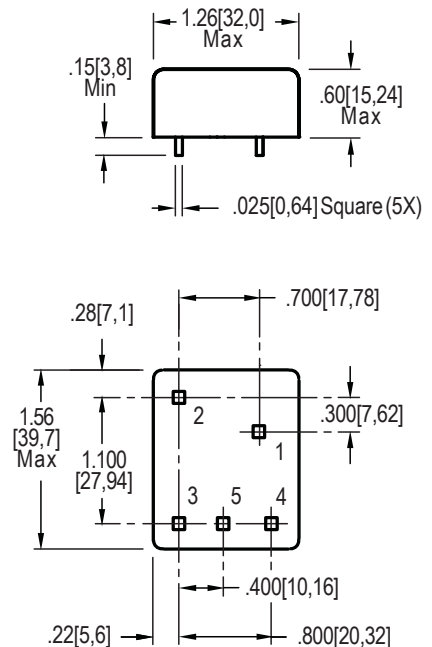
- Full Encapsulation
- PC Mountable
- High efficiency

PHYSICAL SPECIFICATIONS

Size:	1.56" x 1.26" x .60" (39,7mm x 32mm x 15,24mm)
Weight:	39 grams
Component Surface Temperature:	-20° to +80°C
Storage Temperature:	-40° to +85°C
Humidity:	95% RH Max (non-condensing)



Characteristics	Value	Units	Note(s)
Input Voltage	10.8 - 12.6	Vdc	
Input Current	0.63 typ	Adc	$R_L = 83.3 \text{ k}\Omega$
Minimum No Load Output Voltage	1500	Vrms	$V_{in} = 12.0 \text{ Vdc}$
Frequency	35 typ	kHz	$V_{in} = 12.0 \text{ Vdc}$
Output Current (per lamp)	6.0	mArms	$R_L = 83.3 \text{ k}\Omega$
Efficiency	80	%	Typical
The maximum input current (which indicates an overload condition) is .72 Adc maximum.			



1. +Vin
2. GND
3. ACreturn
4. ACout
5. ACout

Inverters specifically designed to match most popular LCD modules are also available. Contact your authorized distributor or ERG direct.

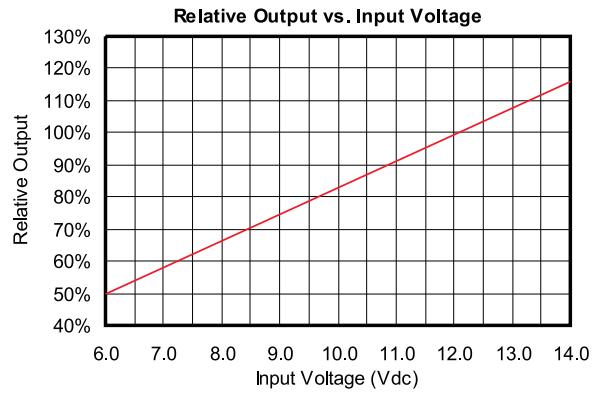
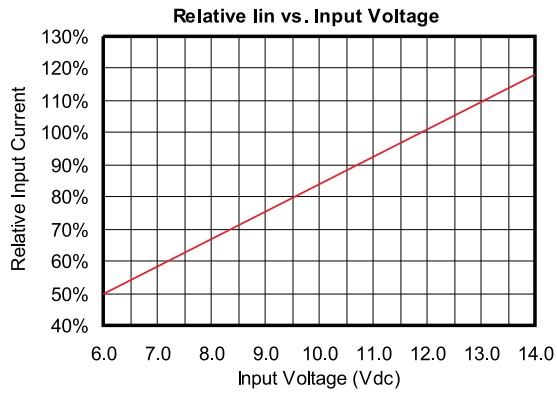
Endicott Research Group, Inc.

2601 Wayne St., Endicott, NY 13760
 607-754-9187 Fax 607-754-9255
<http://www.ergpower.com>

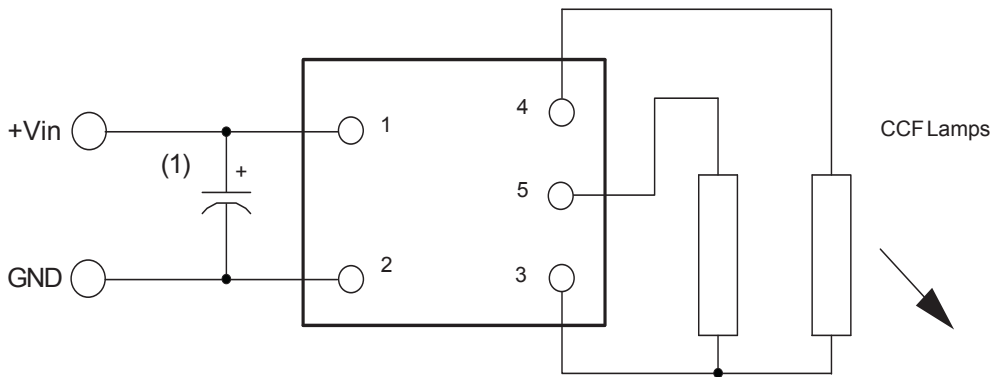
Connection and Application Information

12 Volt Input Dc to Ac Inverter

D12EE60



Connection Diagram



(1) Low ESR type input by-pass capacitor (22 uf - 100 uf) may be required to reduce reflected ripple.



Endicott Research Group, Inc.

2601 Wayne St., Endicott, NY 13760
607-754-9187 Fax 607-754-9255
<http://www.ergpower.com>

Specifications are subject to change without notice. 01/14/11

D Series