

Absolute Maximum Ratings

Rating	Symbol	Value	Units
Input Voltage Range	V _{in}	-0.3 to +13.2	Vdc
Operating Temperature	T _o	-0 to +70	°C
Storage Temperature	T _{stg}	-40 to +85	°C

Recommended Operating Conditions

Rating	Symbol	Value	Units
Input Voltage	V _{in}	+10.8 to 12.6	Vdc

Electrical Characteristics

Unless otherwise noted V_{in} = 12.00 Volts dc and T_a = 25°C

Characteristic	Symbol	Min	Typ	Max	Units
Input Current ^(note 1)	I _{in}	-	.23	.26	Adc
Operating Frequency	F _o	38	43	48	KHz
Minimum Output Voltage	V _{out} (min)	1000	-	-	Vrms
Efficiency	-	-	82	-	%
Output Current (per tube)	I _{out}	-	4.6	-	marms
Output Voltage (When powering a load simulating the referenced display)	V _{out}	-	490	-	Vrms
Pin3 Input Current Requirement	-	-	7	-	madc

After lamp has been allowed to warm-up for 5 minutes
External Disable Circuit shown on page 3.

Specifications subject to change without notice.

(Note 1) Input current in excess of maximum may indicate a load/inverter mismatch condition, which can result in reduced reliability. Please contact ERG technical support.

Application Notes:

- 1) The minimum distance from high voltage areas of the inverter to any conductive material should be .12 inches per kilovolt of starting voltage.
- 2) Mounting hardware should be non-conductive.
- 3) Open framed inverters should not be used in applications at altitudes over 10,000 feet.
- 4) Contact ERG for possible exceptions.



Endicott Research Group, Inc.

2601 Wayne St., Endicott, NY 13760
607-754-9187 Fax 607-754-9255
<http://www.ergpower.com>

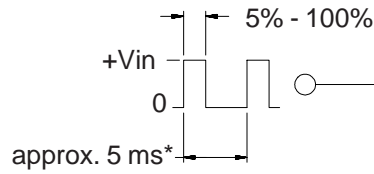
Made in USA



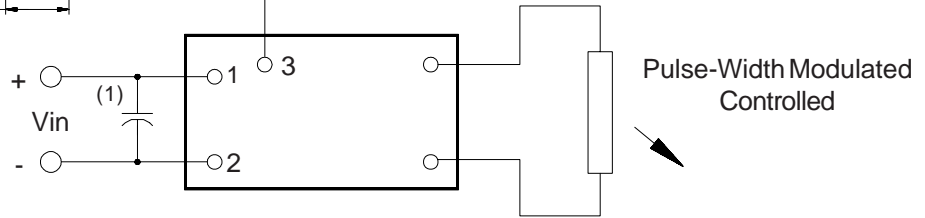
3 Dimming Options

(Valid with "C" jumper removed)

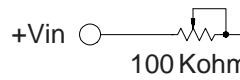
8m123287



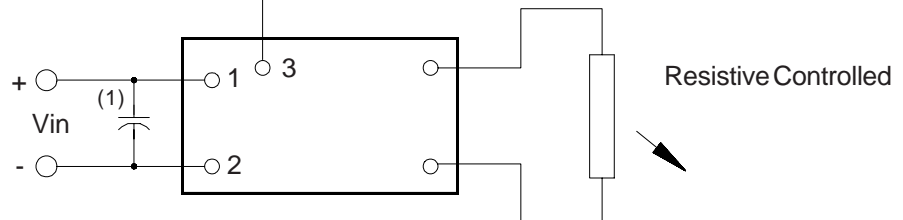
* should be selected to be compatible with LCD and display driver



Pulse-Width Modulated Controlled



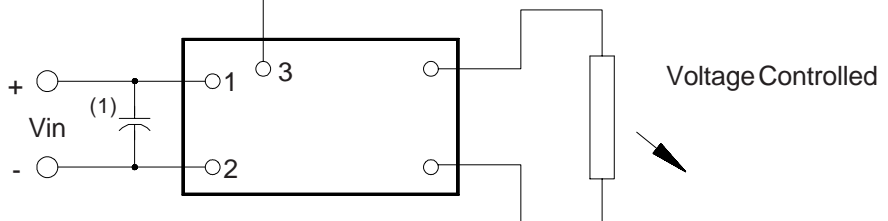
* value should be low enough to maintain minimum tube current at minimum brightness



Resistive Controlled

Vmin* to +Vin

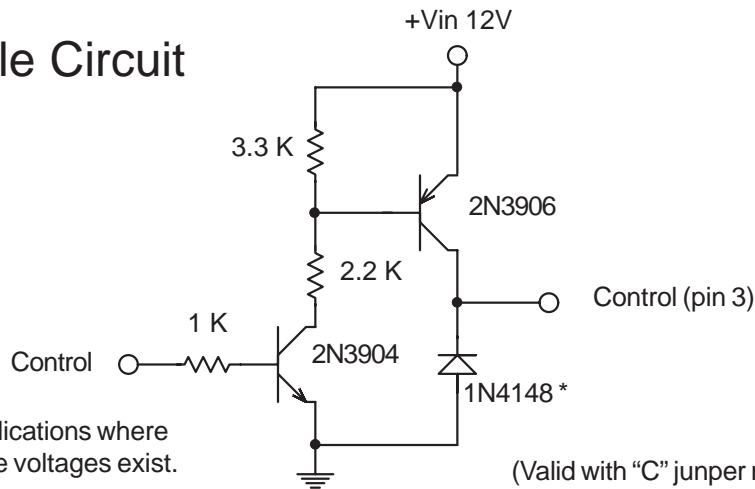
* Vmin should be high enough to maintain minimum tube current



Voltage Controlled

Note 1 - Low ESR type input by-pass capacitor (22 uf - 100uf) may be required to reduce reflected ripple.

Disable Circuit



* Remove 1N4148 in applications where excessive ground bounce voltages exist.

(Valid with "C" jumper removed)



Endicott Research Group, Inc. (ERG) reserves the right to make changes in circuit design and/or specifications at any time without notice. Accordingly, the reader is cautioned to verify that data sheets are current before placing orders. Information furnished by ERG is believed to be accurate and reliable. However, no responsibility is assumed by ERG for its use.