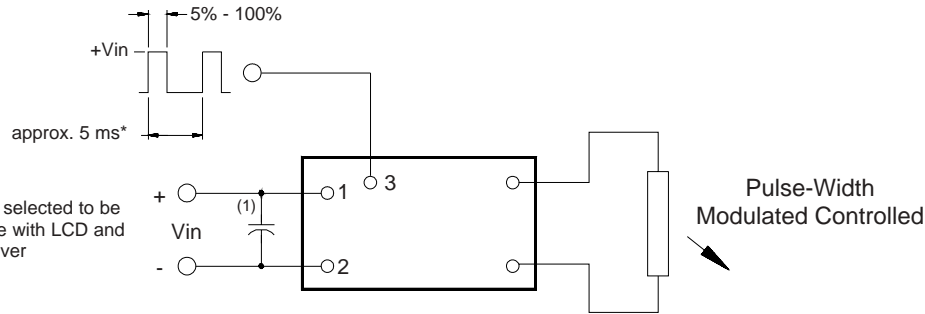


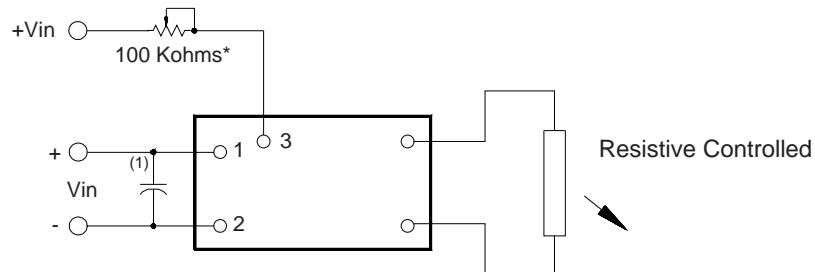
8m122738

3 Dimming Options

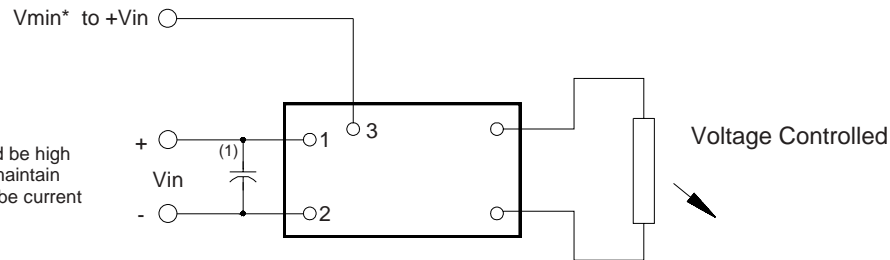
(valid when the "C" jumper is removed)



* should be selected to be compatible with LCD and display driver



* value should be low enough to maintain minimum tube current at minimum brightness



* Vmin should be high enough to maintain minimum tube current

Note 1 Input by-pass capacitor (25 uf - 100uf) may be required to reduce reflected ripple.



Endicott Research Group, Inc.

2601 Wayne St., Endicott NY 13760

607-754-9187



Endicott Research Group, Inc.

2601 Wayne St., Endicott NY 13760

607-754-9187 Fax 607-754-9255

<http://www.ergpower.com>

Specifications and Applications Information

05/15/02

Preliminary

The ERG 8m122738 (**8m Class**) low profile dc to ac inverter is specifically designed to power the Optrex T-51410D104-FW-P-AF LCD display module to a moderate brightness level from a +12 volt dc source.

This low profile inverter features:

- ✓ Less Than 8 mm in Height
- ✓ LCD Module Specific
- ✓ Display Compatible Output Connector
- ✓ Firm Specifications
- ✓ Application Information
- ✓ Made in U.S.A.
- ✓ Factory Support
- ✓ Custom Input and Output Voltages
- ✓ Flexible System Interface
- ✓ Notebook Display Head Compatible

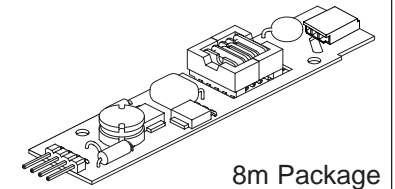
Pin Descriptions

Input Connector		Output Connector	
4 pins are 0.315" [8,00] Long, 0.025" [0,63] Square and are on 0.100" [2,54] Centers.		JST SM02B-BHSS-1-TB	
Con1-1	Vin(+)	Con2-1	ACout
Con1-2	GND	Con2-2	ACout
Con1-3	Control *		
Con1-4	N/C		

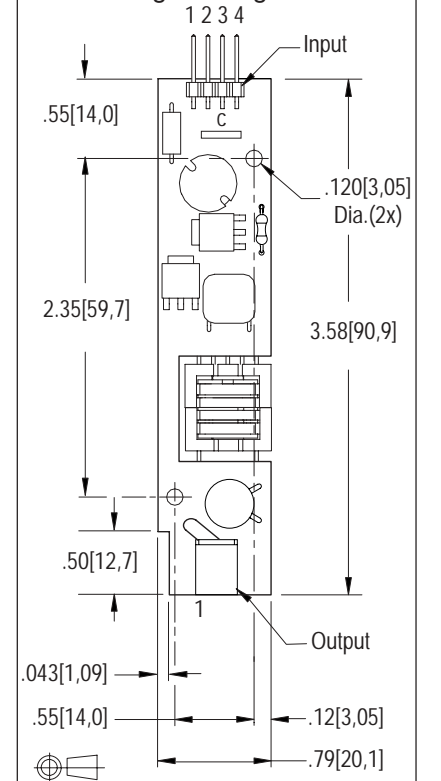
* Valid with the "C" jumper removed

8m122738

8m Class DC to AC Inverter



Package Configuration



8m122738

Absolute Maximum Ratings

Rating	Symbol	Value	Units
Input Voltage Range	V _{in}	-0.3 to +13.2	Vdc
Operating Temperature	T _o	-0 to +85	°C
Storage Temperature	T _{stg}	-40 to +85	°C

Recommended Operating Conditions

Rating	Symbol	Value	Units
Input Voltage	V _{in}	+6 to 13.2	Vdc

Electrical Characteristics

Unless otherwise noted V_{in} = 12.00 Volts dc and T_a = 25°C

Characteristic	Symbol	Min	Typ	Max	Units
Input Current	I _{in}	-	.38	.44	Adc
Operating Frequency	F _o	33	38	43	KHz
Minimum Output Voltage	V _{out} (min)	1200	-	-	Vrms
Efficiency	h	-	84	-	%
Output Current	I _{out}	-	7	-	marms
Output Voltage (When powering a load simulating the referenced display)	V _{out}	-	550	-	Vrms
Pin3 Input Current Requirement	-	-	12	-	madc

After tube has been allowed to warm-up for 5 minutes Specifications subject to change without notice.
External Disable Circuit shown on page 3.

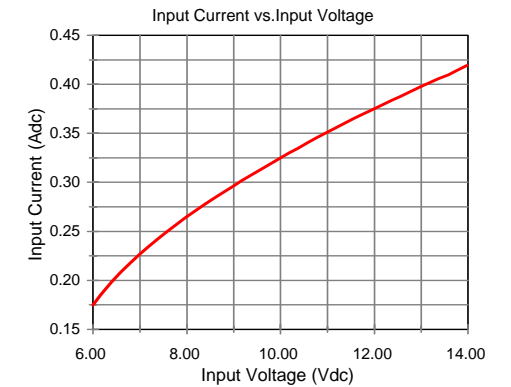
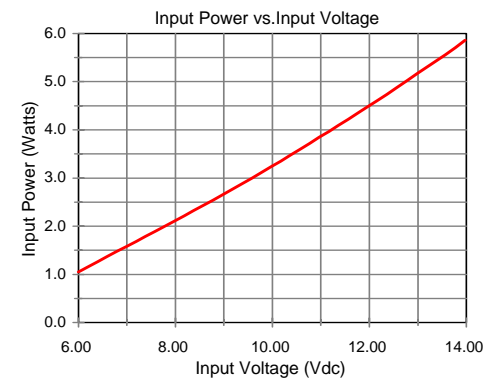
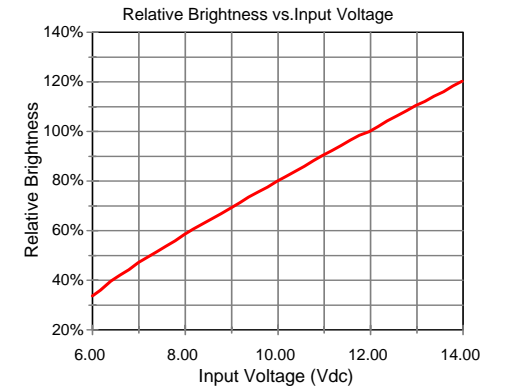
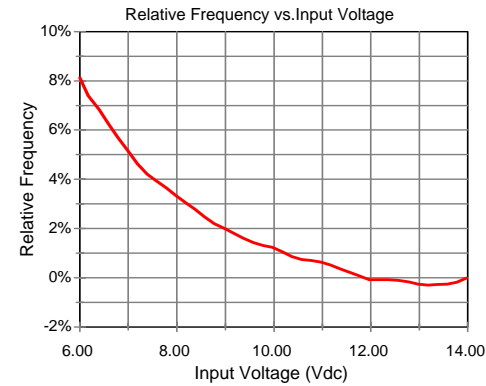


Endicott Research Group, Inc.

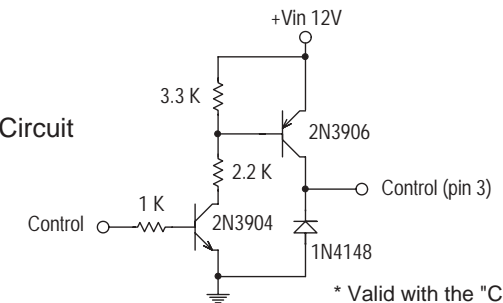
Made in USA

Typical Performance Curves

8m122738



Disable Circuit



* Valid with the "C" jumper removed



Endicott Research Group, Inc.