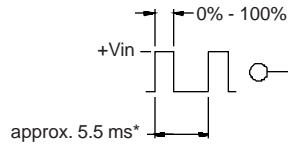
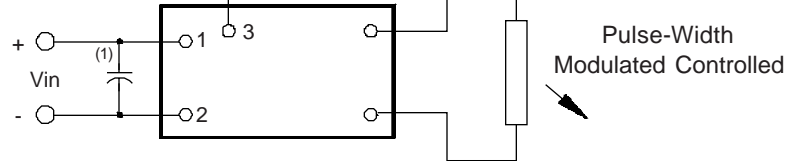


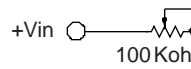
3 Dimming Options (valid when the "C" jumper is removed)



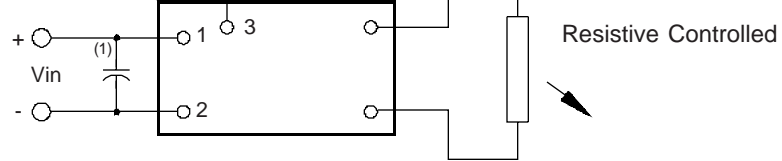
* should be selected to be compatible with LCD and display driver



Pulse-Width Modulated Controlled



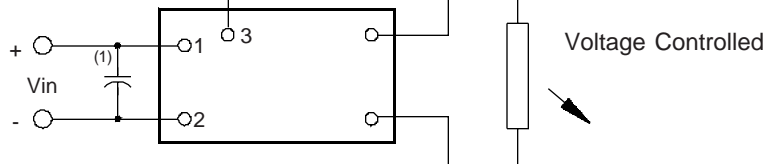
* value should be low enough to maintain minimum tube current at minimum brightness



Resistive Controlled



* Vmin should be high enough to maintain minimum tube current



Voltage Controlled

Note 1 Input by-pass capacitor (25 uf - 100uf) may be required to reduce reflected ripple.

8m121919



Endicott Research Group, Inc.

2601 Wayne St., Endicott NY 13760

607-754-9187 Fax 607-754-9255

Specifications and Applications Information

10/14/96

Preliminary

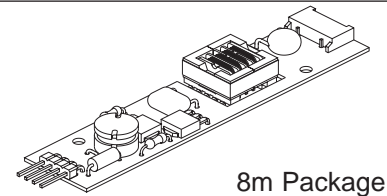
The ERG 8m121919 (8m Class) low profile dc to ac inverter is specifically designed to power the Sharp LQ10D321 LCD display module to a moderate brightness level from a +12 volt dc source.

This low profile inverter features:

- ✓ Less Than 8 mm in Height
- ✓ LCD Module Specific
- ✓ Display Compatible Output Connector
- ✓ High Efficiency (80% - 85%)
- ✓ Firm Specifications
- ✓ Application Information
- ✓ Made in U.S.A.
- ✓ Factory Support
- ✓ Custom Input and Output Voltages
- ✓ Flexible System Interface
- ✓ Notebook Display Head Compatible

8m121919

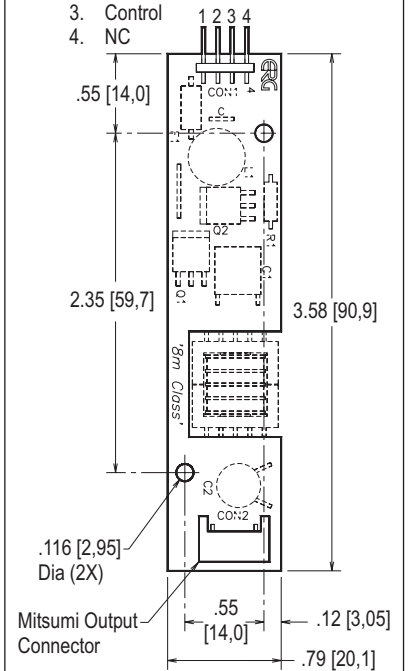
8m Class
DC to AC Inverter



8m Package

Package Configuration

1. Vin(+)
2. Vin(-)
3. Control
4. NC



Absolute Maximum Ratings

Rating	Symbol	Value	Units
Input Voltage Range	V _{in}	-0.3 to +15	Vdc
Operating Temperature	T _o	0 to +70	°C
Storage Temperature	T _{stg}	-40 to +85	°C

Recommended Operating Conditions

Rating	Symbol	Value	Units
Input Voltage	V _{in}	+6 to 13.2	Vdc

Electrical Characteristics

Unless otherwise noted V_{in} = 12.00 Volts dc and T_a = 25°C

Characteristic	Symbol	Min	Typ	Max	Units
Input Current	I _{in}	-	0.2	0.25	A _{dc}
Operating Frequency	F _o	26	31	36	KHz
Minimum Output Voltage	V _{out (min)}	1100	-	-	V _{rms}
Efficiency	η	-	83	-	%
Output Current	I _{out}	-	4	-	mA _{rms}
Output Voltage (When Powering a Sharp LQ10D321 display)	V _{out}	-	500	-	V _{rms}

After tube has been allowed to warm-up for 5 minutes

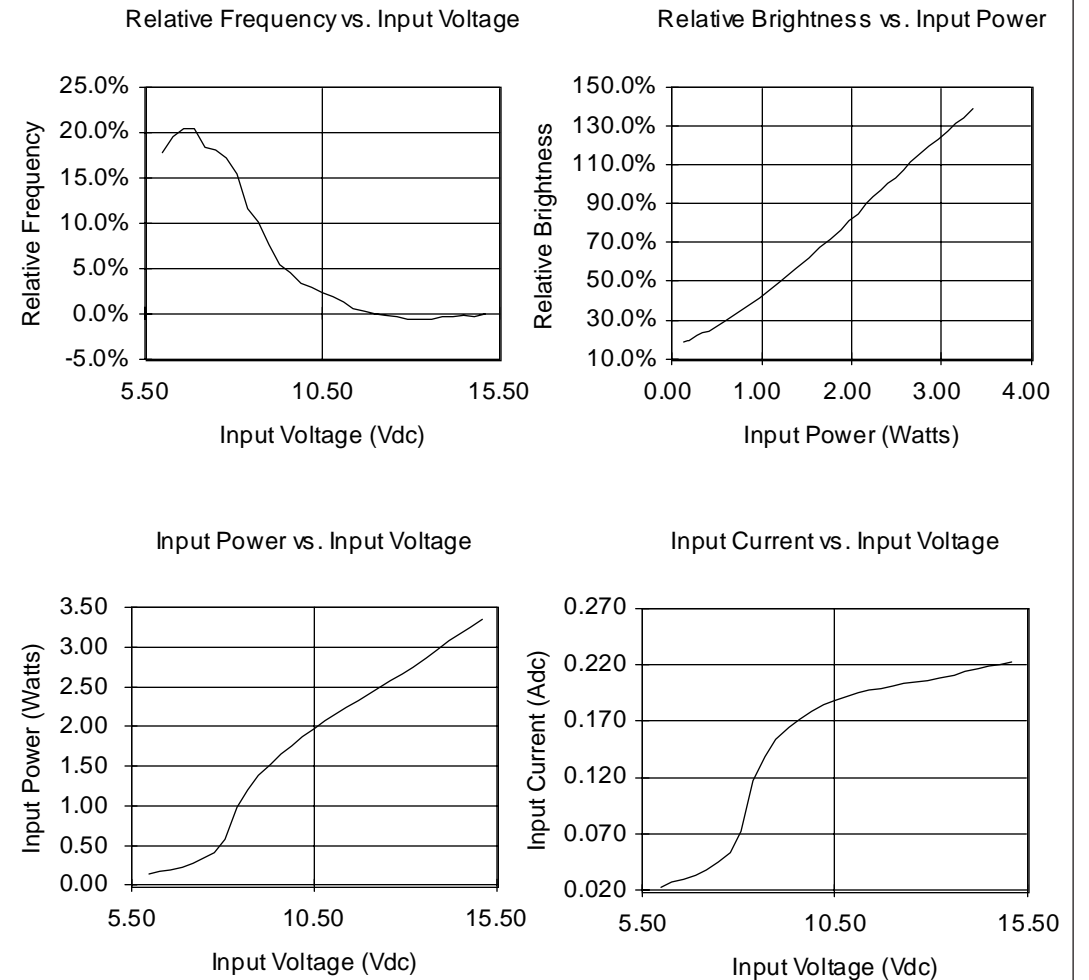
Specifications subject to change without notice



Endicott Research Group, Inc.

Made in USA

Typical Performance Curves



Endicott Research Group, Inc.