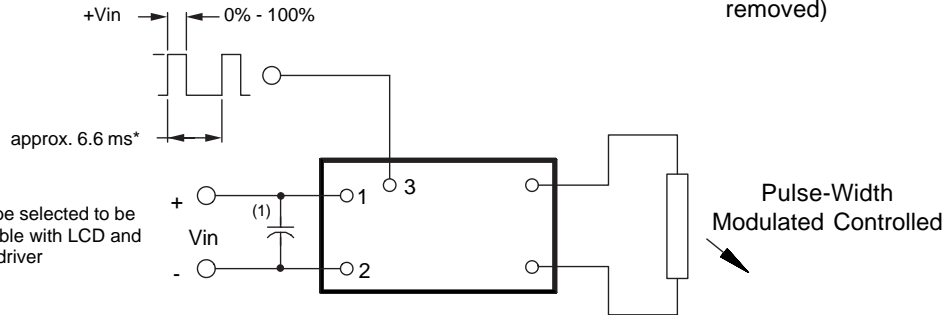
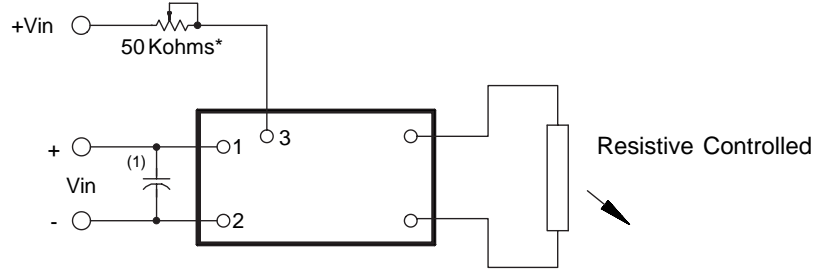


**3 Dimming Options**  
(valid when the "C" jumper is removed)



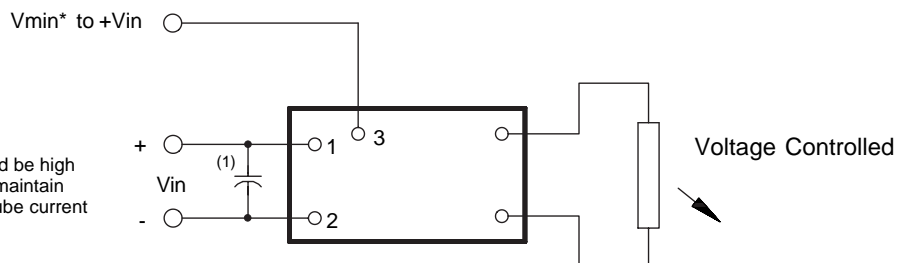
\* should be selected to be compatible with LCD and display driver

Pulse-Width Modulated Controlled



\* value should be low enough to maintain minimum tube current at minimum brightness

Resistive Controlled



\* Vmin should be high enough to maintain minimum tube current

Voltage Controlled

Note 1 Input by-pass capacitor (25 uf - 100uf) may be required to reduce reflected ripple.

8m121904



**Endicott Research Group, Inc.**

2601 Wayne St., Endicott NY 13760  
607-754-9187 Fax 607-754-9255  
<http://www.ergpower.com>

**Specifications and Applications Information**

4/14/97

Preliminary

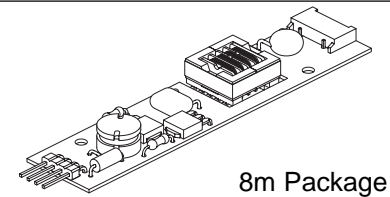
The ERG 8m121904 (*8m Class*) low profile dc to ac inverter is specifically designed to power the Hitachi LMG7380QHFC VGA LCD display module to a moderate brightness level from a +12 volt dc source.

This low profile inverter features:

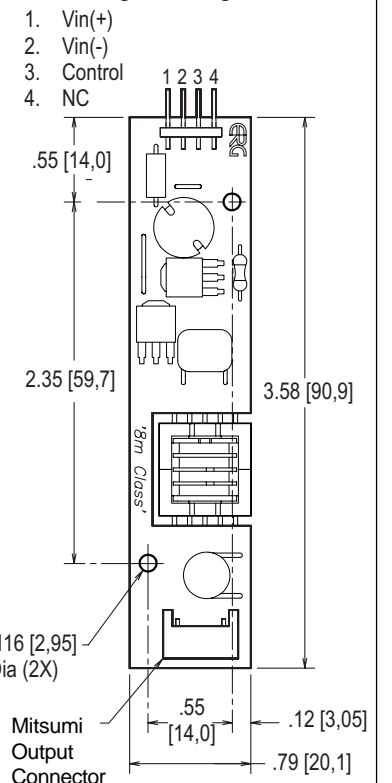
- ✓ Less Than 8 mm in Height
- ✓ LCD Module Specific
- ✓ Display Compatible Output Connector
- ✓ High Efficiency (85%)
- ✓ Firm Specifications
- ✓ Application Information
- ✓ Made in U.S.A.
- ✓ Factory Support
- ✓ Custom Input and Output Voltages
- ✓ Flexible System Interface
- ✓ Notebook Display Head Compatible

8m121904

*8m Class*  
DC to AC Inverter



**Package Configuration**



# 8m121904

## ABSOLUTE MAXIMUM RATINGS

Rating	Symbol	Value	Units
Input Voltage Range	Vin	-0.3 to 13.2	Vdc
Operating Temperature	TO	0 to 70	°C
Storage Temperature	Tstg	-40 to +85	°C

## RECOMMENDED OPERATING CONDITIONS

Rating	Symbol	Value	Units
Input Voltage	Vin	8.0 to 12.6	Vdc

## ELECTRICAL CHARACTERISTICS

Unless otherwise noted Vin = 12.00 Volts dc and Ta = 25°C

Characteristic	Symbol	Min	Typ	Max	Units
Input Current (Vin = 12.00 Volts dc)	lin	-	0.2	0.23	Adc
Operating Frequency (Vin = 12.00 Volts dc)	Fo	25.0	33.0	40.0	Khz
Minimum Output Voltage (Vin = 12.00 Volts Ta = 25 °C)	Vout(min)	1100	-	-	Vrms
Efficiency	eff	-	85	-	%
Output Current	Iout	-	5.3	-	marms
Output Voltage (When powering a Hitachi LMG7380QHFC VGA LCD display)	Vout	-	360	-	Vrms

After tubes has been allowed to warm-up for 5 minutes.

Specifications subject to change without notice.

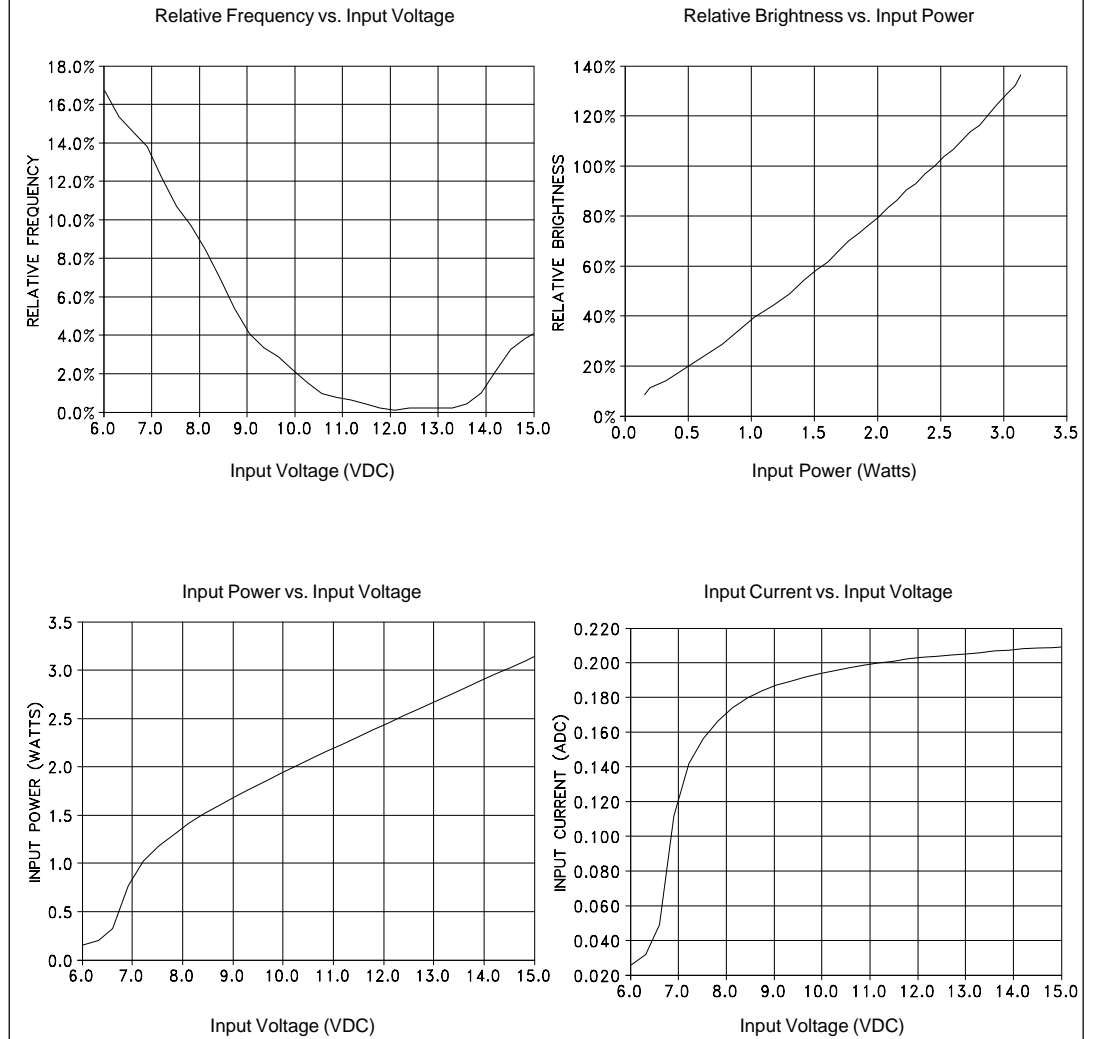


Endicott Research Group, Inc.

Made in USA

# 8m121904

## Typical Performance Curves



Endicott Research Group, Inc.